

...

Product Catalog 2022

Okerel Foreign Trade Inc.

okerel.com



ABOUT US

We Combined Experience with Dynamism

OKEREL Foreign Trade Joint Stock Company, established in 2020, is a company specializing in international trade that provides advantages to its customers with its past experience and wide business network.

By cooperating with foreign companies that want to supply iron and steel casting, conveyor roller, reducer and valve products manufactured in Turkey, we bring Turkish goods to customers in all world markets.

With our young, dynamic and industry-experienced staff, we save you from all the complexity of international trade.

We use changing technologies, communication tools and business resources effectively so that the services we provide to our customers are always of high standards.



Hassle-Free Foreign Trade with OKEREL

OKEREL Foreign Trade Joint Stock Company has a wide range of manufacturers and suppliers. We supply the requested products quickly and reliably, contact the manufacturers and deliver the product in the fastest way.



We do not compromise on trust and quality
OKEREL Foreign Trade Joint Stock Company, aiming to expand the foreign trade of our country by establishing connections between companies engaged in production and sales in various sectors in Turkey and buyers in foreign countries, is able to fulfill customer needs and expectations in the fastest and best way, without compromising trust and quality, has developed an infrastructure aimed at continuous renewal.

- Professional in Business
- Young and Dynamic Staff
- Strong Technical Knowledge
- Forward thinking management



International Standarts

- Production in compliance with all kinds of regulations, together with our business partners who produce in international standards



Sectoral Experience

- Expert staff with industry experience at every stage from production to product delivery to the end user



UNDERSTANDING OF QUALITY

Engineering Solutions

- Formation of successful systems by bringing different disciplines and expertise into a single teamwork form.



Foreign Trade Solutions

- Beside you in all steps of import and export solutions all over the world in safety.



Product **Main Categories**



Iron and Steel Casting

Iron and steel production and foreign trade at international standards, suitable for a wide range of industries



Reduction Gear

Diverse in all areas of the industry wide range of products for applications and import-export to meet the needs



Ürün Ana Kategorileri



Conveyor Roller

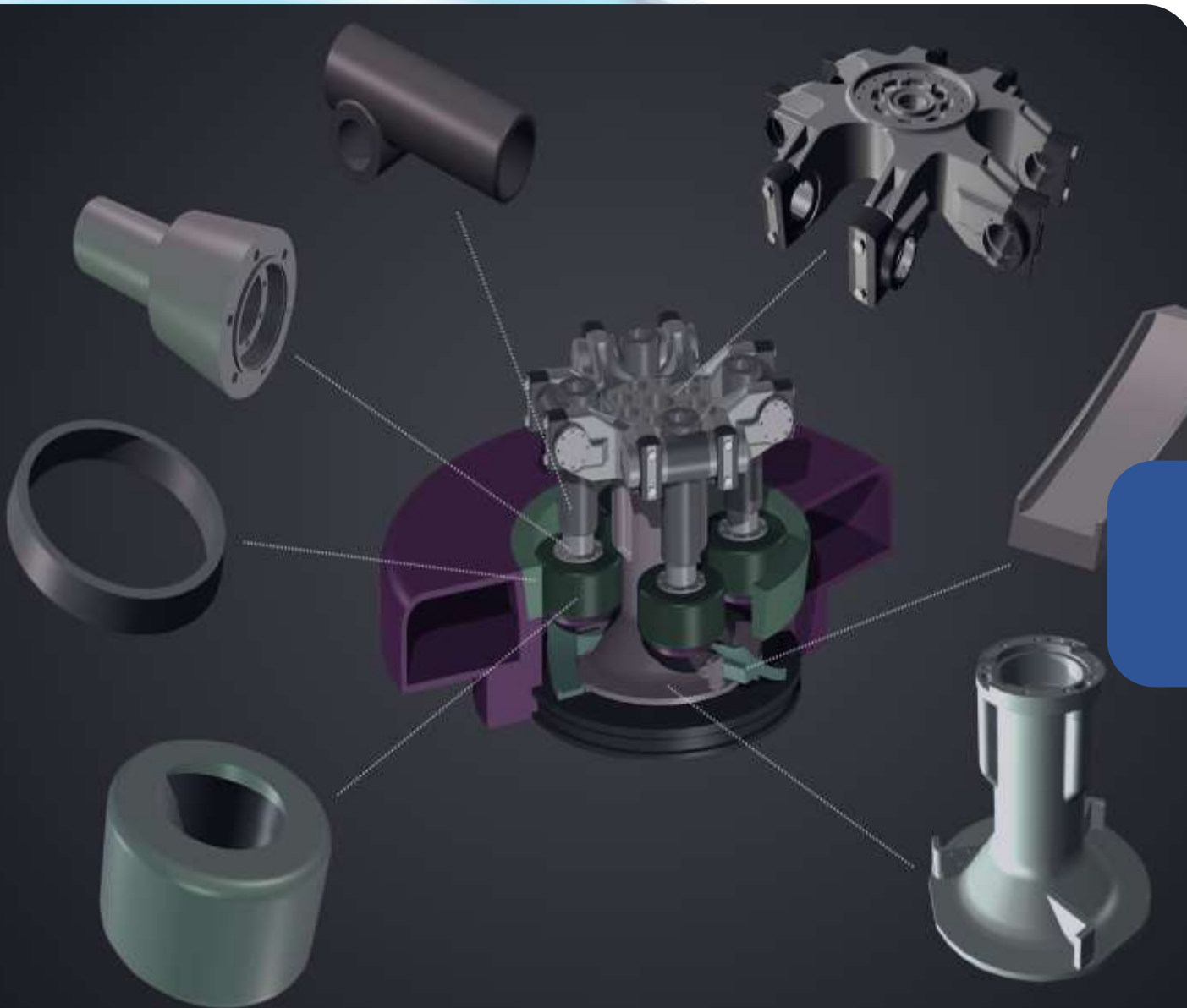
Trading of high availability, durability and quality conveyor rollers, stations and equipment for the bulk handling industry and automation systems



Valve

Valve solutions that increase efficiency in all production stages and help you produce at international standards





General Machinery Industry

Hubs, axles, gears, chains, pulleys,
crane wheels and hooks etc.

General Machinery Industry



mill octopus

Değirmen Ahtapotu



mill ball

Değirmen Topu



oil reservoir

Yağ Haznesi



mill wheel

Değirmen Tekeru

General Machinery Industry



Değirmen Sıyırıcı

mill scraper



Değirmen Yatak Çemberi

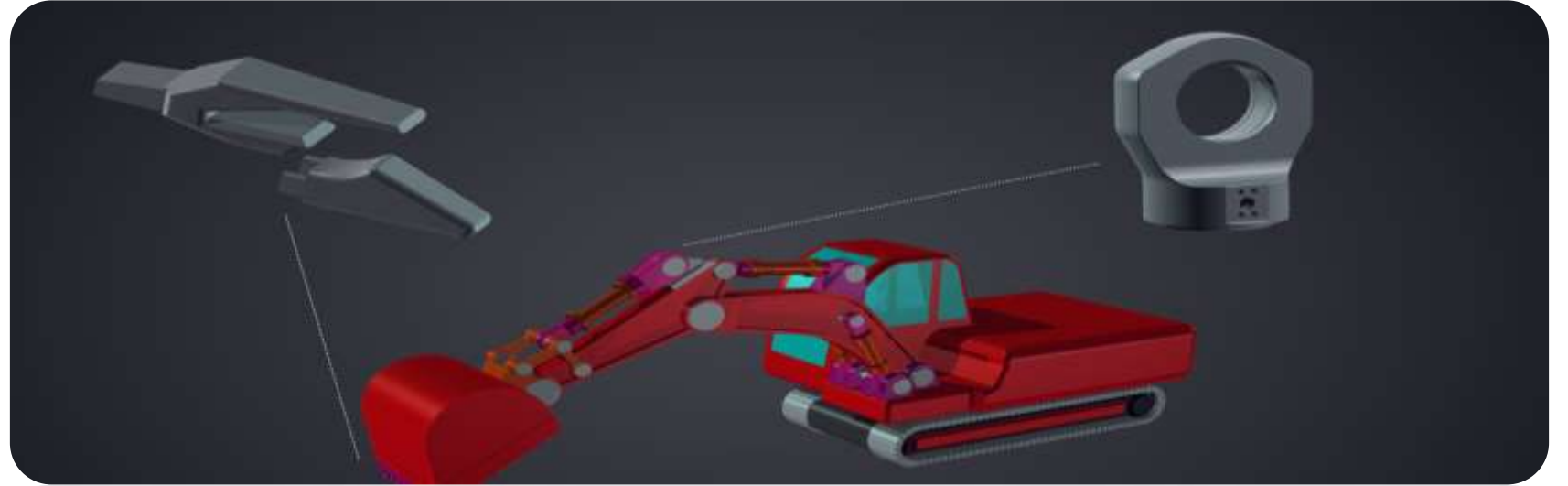
mill bearing
ring



Mikser Gövdesi

mixer body

General Machinery Industry



Adaptör ve Diş

Adapter
and gear



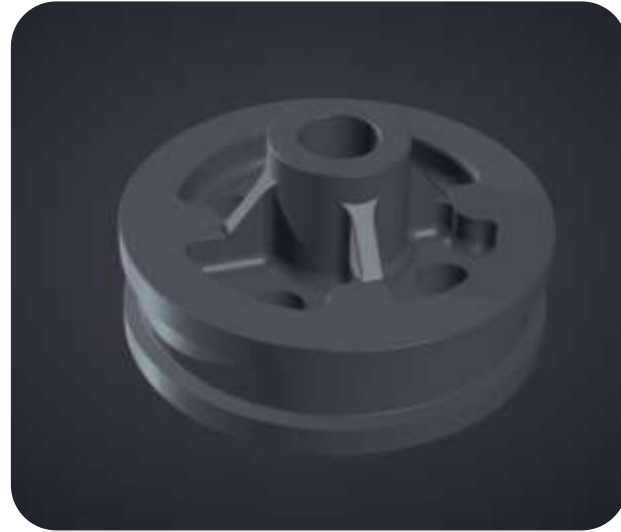
Hidrolik Piston Kafası

Hydraulic
Piston Head

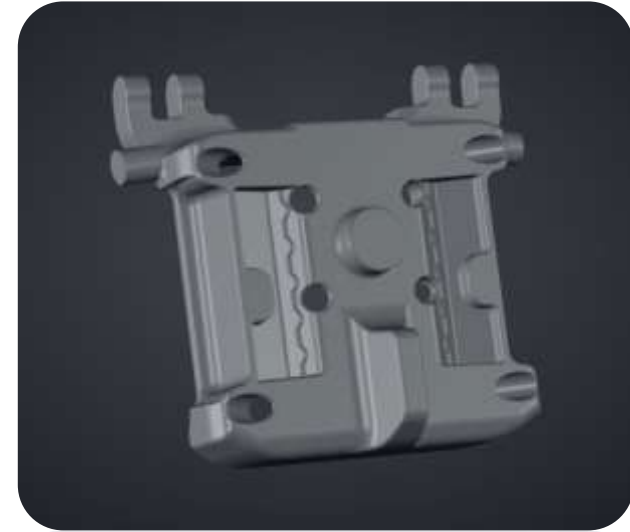
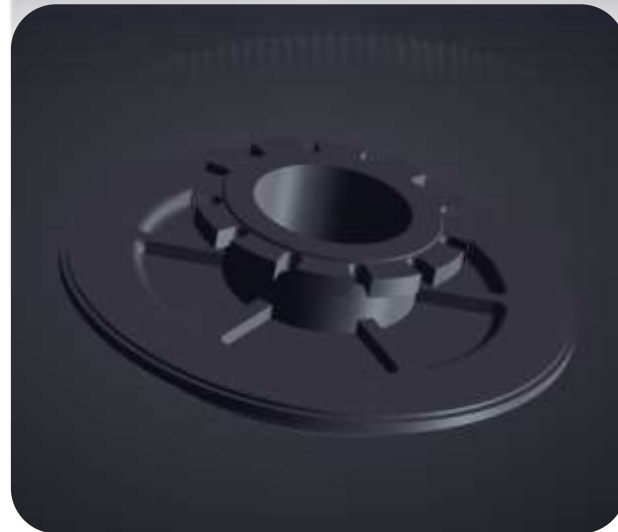
Adaptör ve Diş

Hidrolik Piston Kafası

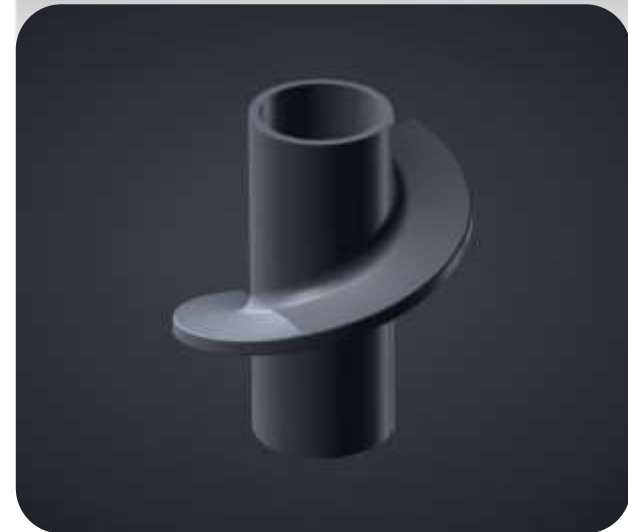
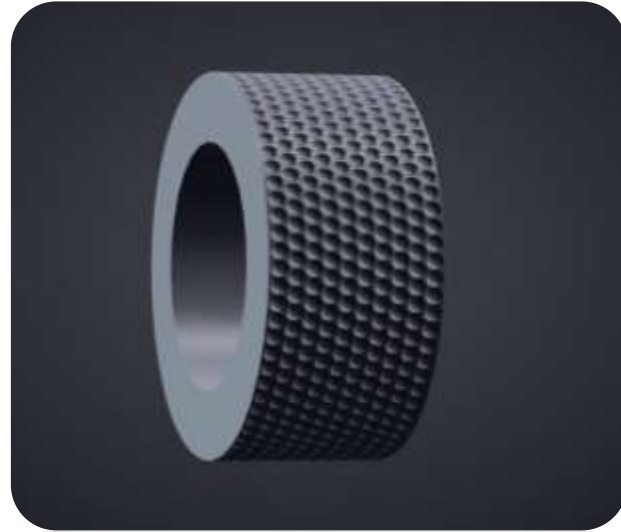
General Machinery Industry



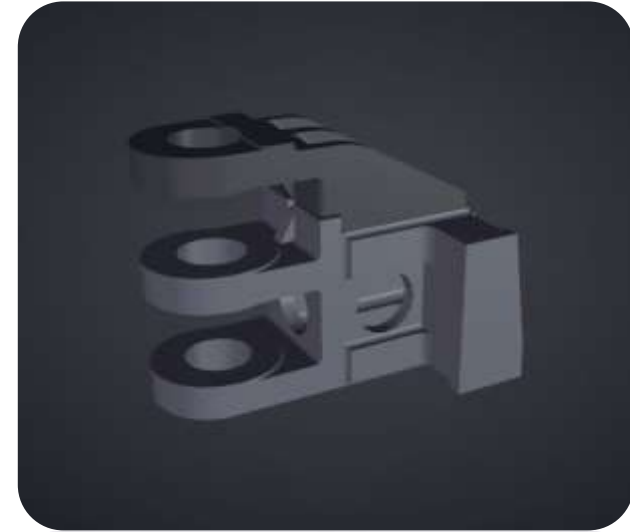
General Machinery Industry



General Machinery Industry



General Machinery Industry



Cone Breakers

Mining and Breaker Industry

Walking tracks used in mining, bucket teeth, wear parts of cone and jaw crushers, crusher bars, bucket linings and feeding screens, crushing rollers etc.



Konik Kırıcı İç Astarı

**Conic breaker
inner lining**



Konik Kırıcı Dış Astarı

**Conic breaker
outer lining**



Konik Değirmen Valsi

Conic mill vals



Konik Kırıcı

Conic breaker



Konik Kırıcı

Conic breaker



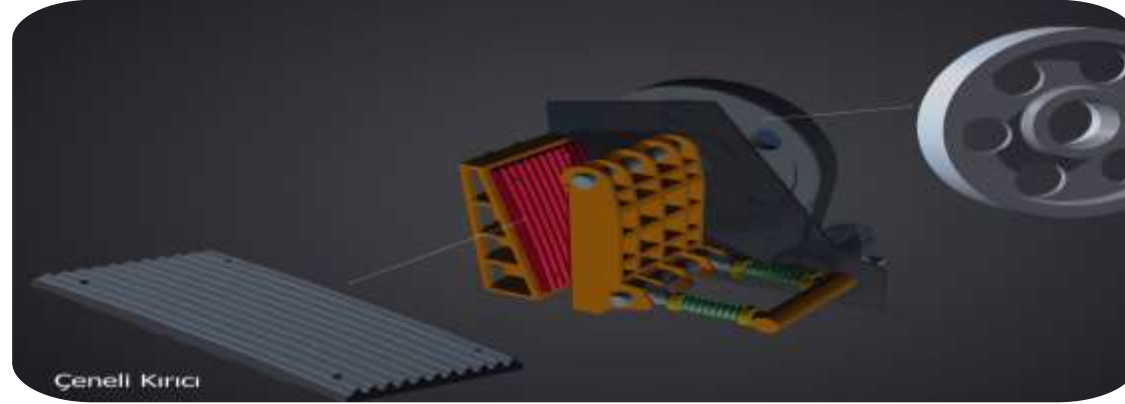
Konik Kırıcı

Conic breaker

Grapple Breakers

Mining and Breaker Industry

Walking tracks used in mining, bucket teeth, wear parts of cone and jaw crushers, crusher bars, bucket linings and feeding screens, crushing rollers etc.



Grapple Breaker



**Grapple Breaker
Pulley**

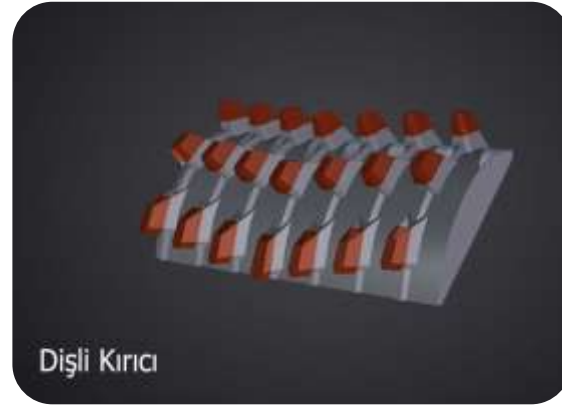


**Grapple Breaker's
Grapple**

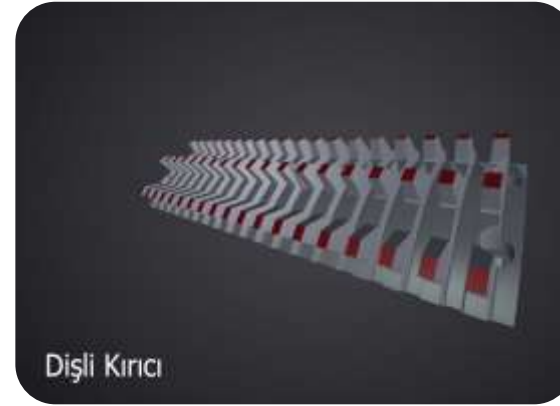
Gear Breakers

Mining and Breaker Industry

Walking tracks used in mining, bucket teeth, wear parts of cone and jaw crushers, crusher bars, bucket linings and feeding screens, crushing rollers etc.



Gear Breaker



Gear Breaker



Gear Breaker



Gear Breaker



Gear Breaker

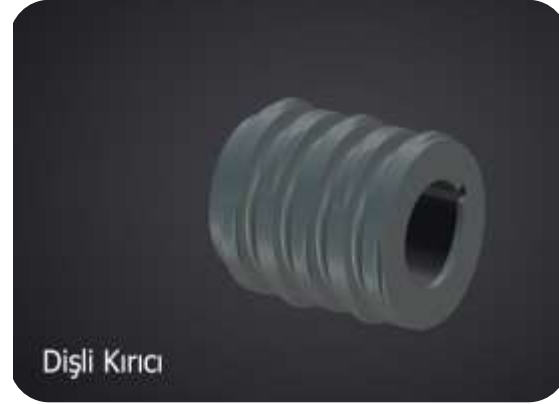


Gear Breaker

Gear Breakers

Mining and Breaker Industry

Walking tracks used in mining, bucket teeth, wear parts of cone and jaw crushers, crusher bars, bucket linings and feeding screens, crushing rollers etc.



Dişli Kırıcı

Gear Breaker



Dişli Kırıcı

Gear Breaker



Dişli Kırıcı

Gear Breaker



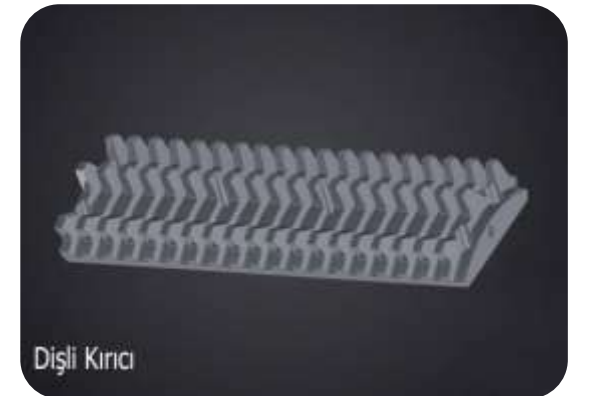
Dişli Kırıcı

Gear Breaker



Dişli Kırıcı

Gear Breaker



Dişli Kırıcı

Gear Breaker

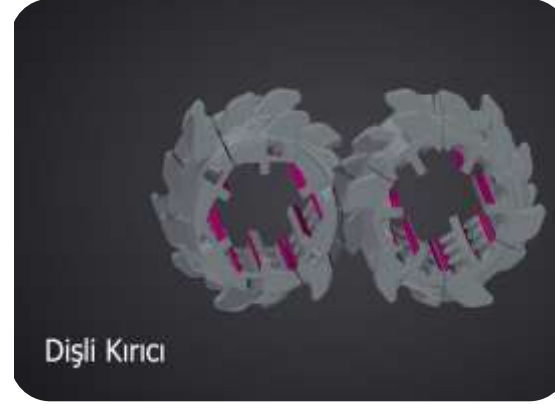
Gear Breakers

Mining and Breaker Industry

Walking tracks used in mining, bucket teeth, wear parts of cone and jaw crushers, crusher bars, bucket linings and feeding screens, crushing rollers etc.



Gear Breaker



Gear Breaker



Gear Breaker

Pallets Breakers

Mining and Breaker Industry

Walking tracks used in mining, bucket teeth, wear parts of cone and jaw crushers, crusher bars, bucket linings and feeding screens, crushing rollers etc.



Paletli Kırıcı Astar Plakası

**Pallets Breaker
Lining Plate**



Paletli Kırıcı Paleti

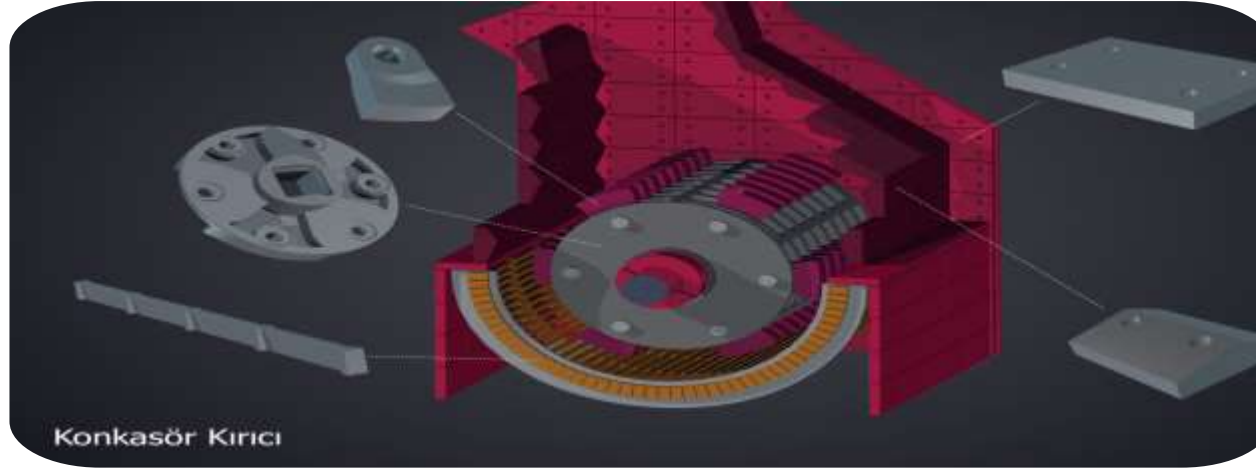
**Pallets Breaker
Plate**



Paletli Kırıcı Rotor Diski

**Pallets Breaker
Rotor Disc**

Crusher Breakers



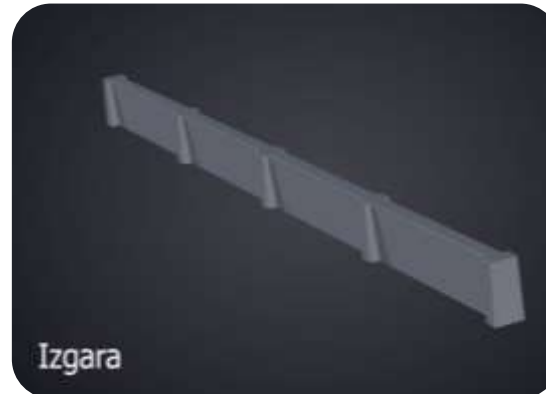
Cement Industry

High heat resistant steel castings, cooling plates and plate carrier chassis, rotary kiln outer segments, cyclone pipes, flaps.

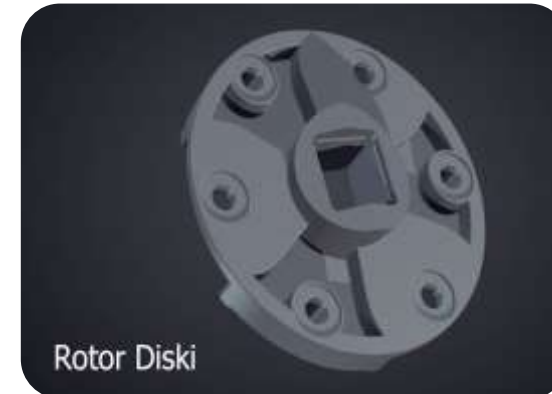
Wear and impact resistant steel castings, mill lining plates, baffle diaphragm plates, crusher disc and hammers, crusher gear plates etc.



Lining Plate



Grill

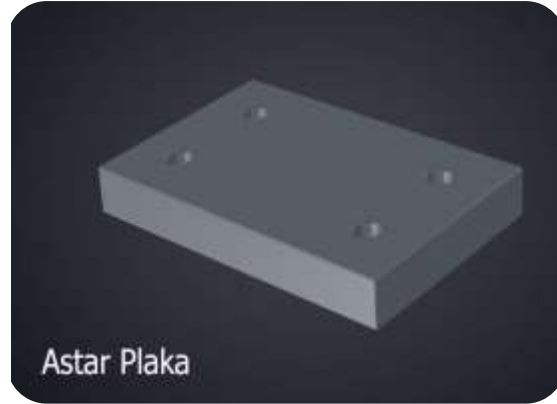


Rotor Disc

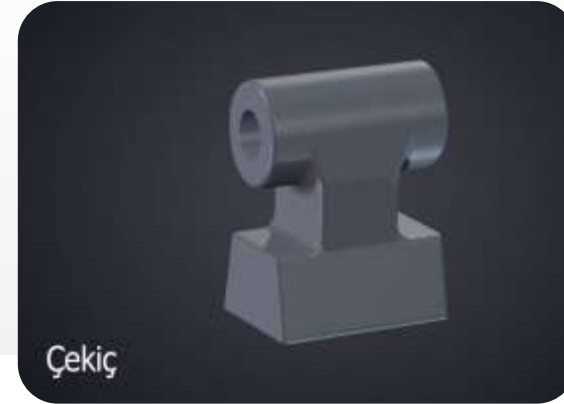
Crusher Breakers



Çekiç

Hammer

Astar Plaka

Lining Plate

Çekiç

Hammer

Örs

Anvil

Çekiç

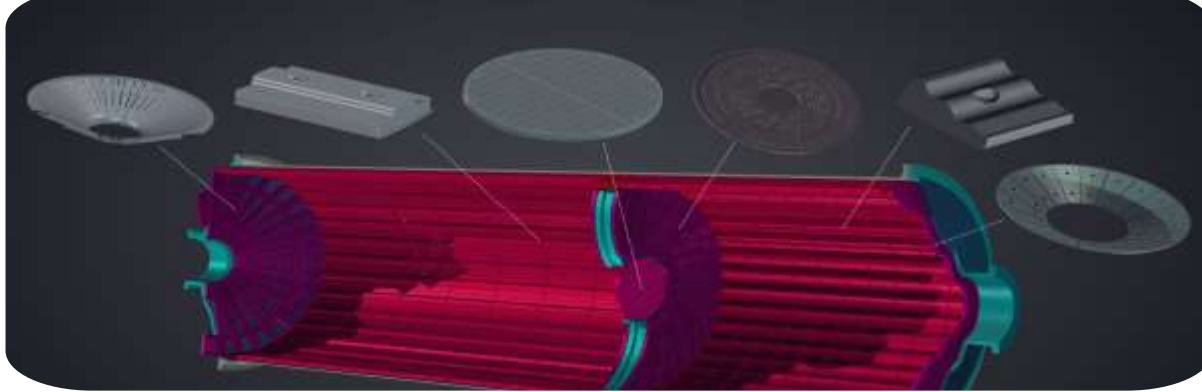
Hammer

Cement Industry

High heat resistant steel castings, cooling plates and plate carrier chassis, rotary kiln outer segments, cyclone pipes, flaps.

Wear and impact resistant steel castings, mill lining plates, baffle diaphragm plates, crusher disc and hammers, crusher gear plates etc.

Ball Mill



Cement Industry

High heat resistant steel castings, cooling plates and plate carrier chassis, rotary kiln outer segments, cyclone pipes, flaps.

Wear and impact resistant steel castings, mill lining plates, baffle diaphragm plates, crusher disc and hammers, crusher gear plates etc.



Değirmen Giriş Plakası

Mill Entrance Plate



Astar Plakası

Lining Plate



Değirmen Diyafram Plakası

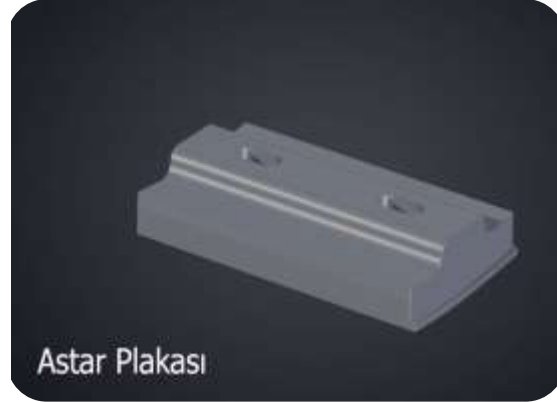
Mill Diaphragm Plate

Ball Mill



Diyafram Izgarası

Diaphragm Grill



Astar Plakası

Lining Plate



Değirmen Çıkış Plakası

Mill Exit Plate



Izgara Plaka

Grill Plate



Izgara Plaka

Grill Plate



Izgara Plaka

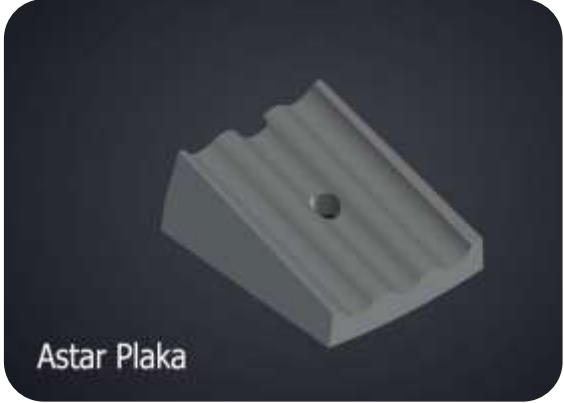
Grill Plate

Cement Industry

High heat resistant steel castings, cooling plates and plate carrier chassis, rotary kiln outer segments, cyclone pipes, flaps.

Wear and impact resistant steel castings, mill lining plates, baffle diaphragm plates, crusher disc and hammers, crusher gear plates etc.

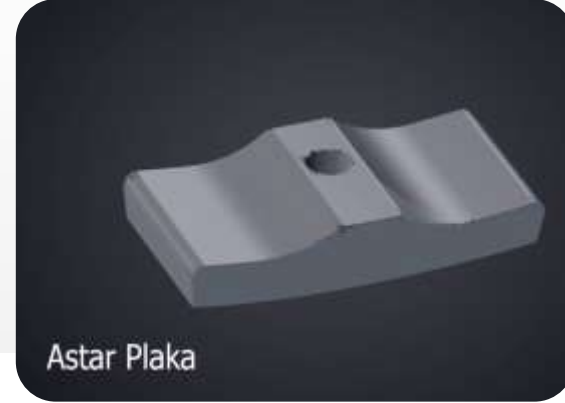
Ball Mill



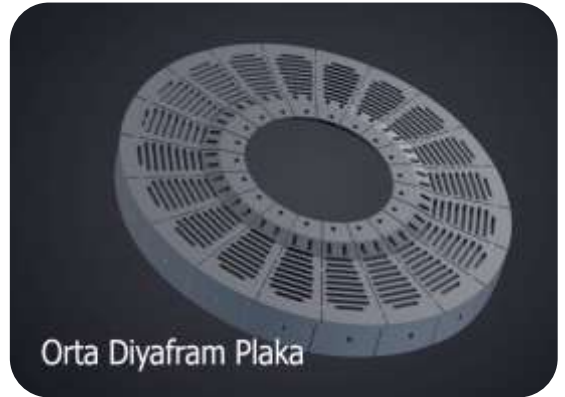
Lining Plate



Lining Plate



Lining Plate



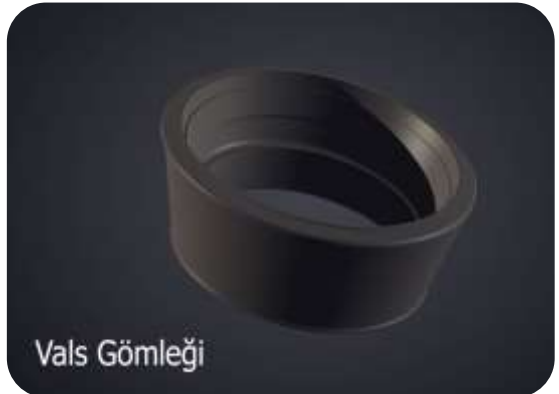
Middle Diaphragm Plate

Cement Industry

High heat resistant steel castings, cooling plates and plate carrier chassis, rotary kiln outer segments, cyclone pipes, flaps.

Wear and impact resistant steel castings, mill lining plates, baffle diaphragm plates, crusher disc and hammers, crusher gear plates etc.

Vertical Mill



Mill Table

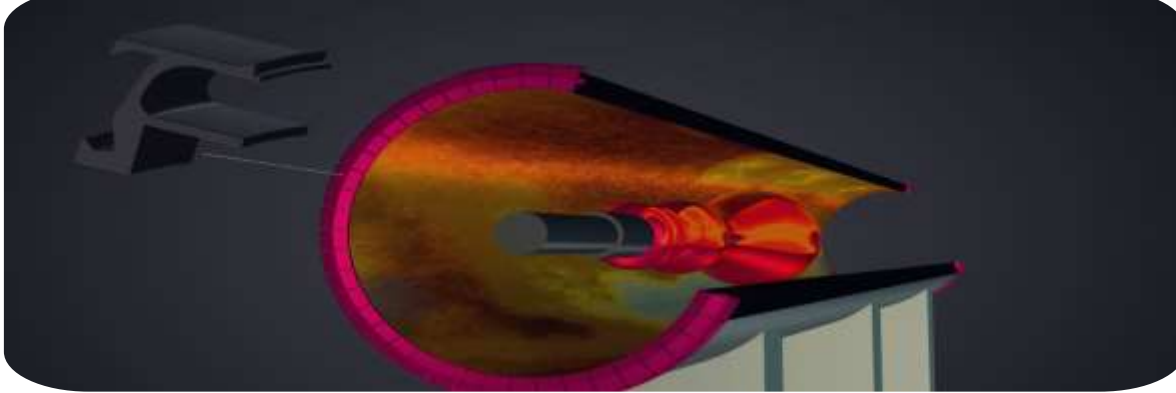
Mill Table

Cement Industry

High heat resistant steel castings, cooling plates and plate carrier chassis, rotary kiln outer segments, cyclone pipes, flaps.

Wear and impact resistant steel castings, mill lining plates, baffle diaphragm plates, crusher disc and hammers, crusher gear plates etc.

Clinker Oven



Fırın Giriş Ağız Tuğla Tutucu

Brick Holder

Cement Industry

High heat resistant steel castings, cooling plates and plate carrier chassis, rotary kiln outer segments, cyclone pipes, flaps.

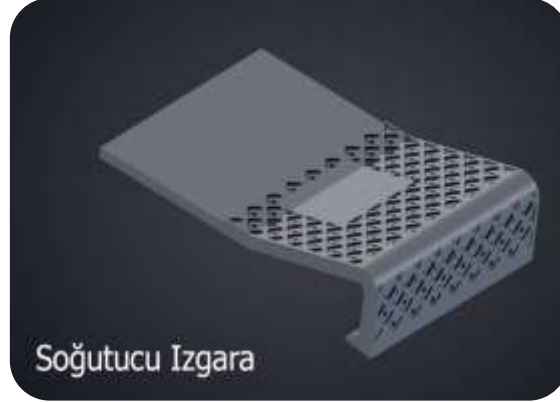
Wear and impact resistant steel castings, mill lining plates, baffle diaphragm plates, crusher disc and hammers, crusher gear plates etc.

Clinker Cooler



Soğutucu Yan Duvar

**Cooler Side
Wall**



Soğutucu Izgara

Cooler Grill



Soğutucu Izgara Yatağı

**Cooler Grill
Bearings**



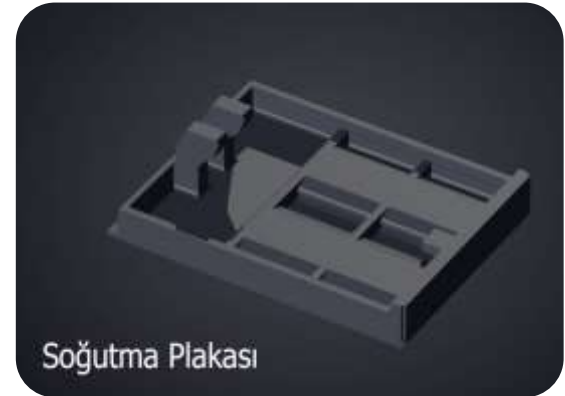
Klepe

Throttle



Soğutma Plakası

Cooler Plate



Soğutma Plakası

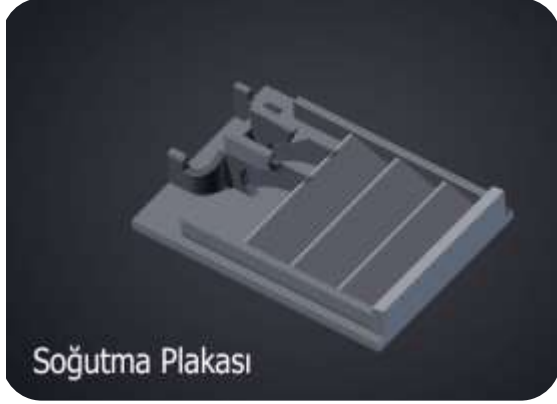
Cooler Plate

Cement Industry

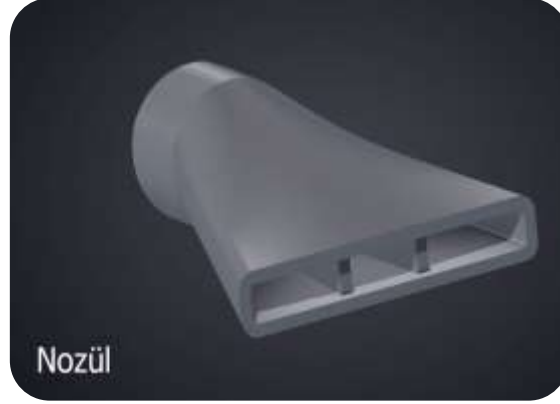
High heat resistant steel castings, cooling plates and plate carrier chassis, rotary kiln outer segments, cyclone pipes, flaps.

Wear and impact resistant steel castings, mill lining plates, baffle diaphragm plates, crusher disc and hammers, crusher gear plates etc.

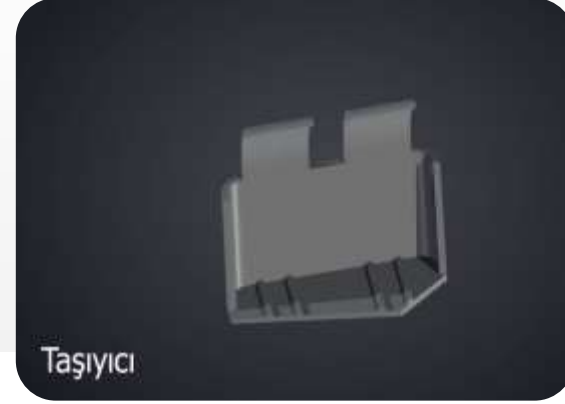
Clinker Cooler



Cooler Plate



Nozzle



Carrier



Chain

Cement Industry

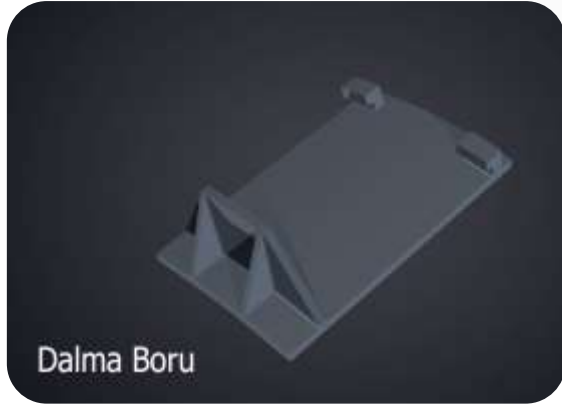
High heat resistant steel castings, cooling plates and plate carrier chassis, rotary kiln outer segments, cyclone pipes, flaps.

Wear and impact resistant steel castings, mill lining plates, baffle diaphragm plates, crusher disc and hammers, crusher gear plates etc.

Cyclone



plunge pipe



plunge pipe



plunge pipe



Cyclone

Cement Industry

High heat resistant steel castings, cooling plates and plate carrier chassis, rotary kiln outer segments, cyclone pipes, flaps.

Wear and impact resistant steel castings, mill lining plates, baffle diaphragm plates, crusher disc and hammers, crusher gear plates etc.

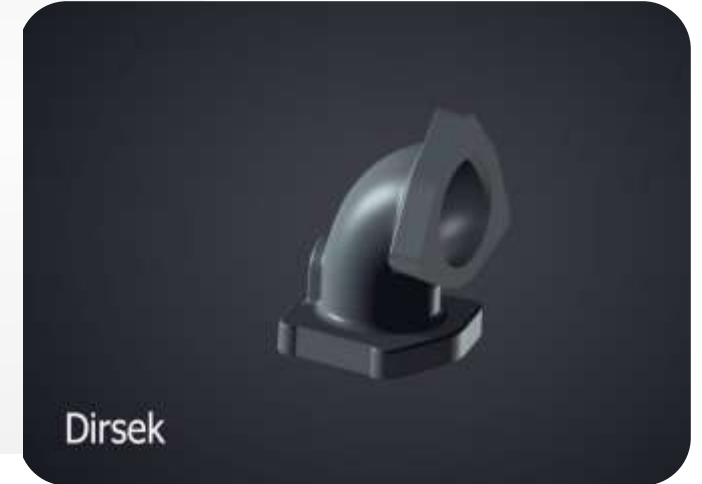
Mud and Concrete Pump Industry

Different sizes of valve body covers and discs, separator parts are produced.



Adaptör

Adapter



Dirsek

Bend



Klepe

Throttle



Dirsek

Bend

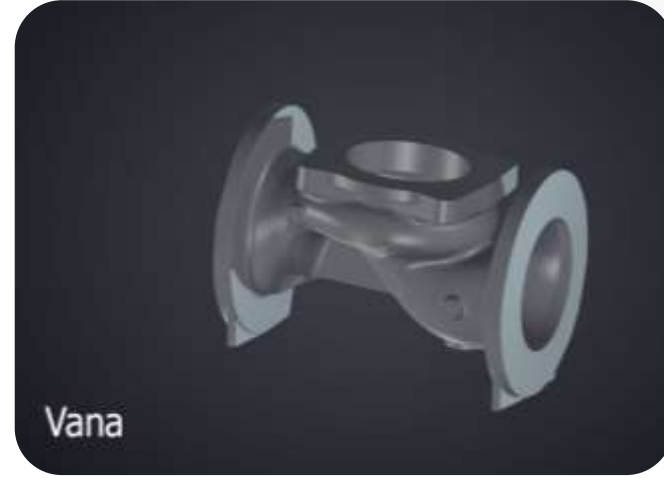


Y Body Vana

Y-Type Valve

Mud and Concrete Pump Industry

Different sizes of valve body covers and discs, separator parts are produced.



Vana

Valve



Vana

Valve



Bağlantı Borusu

Connecting Pipe



T Body Vana

T-Type Valve

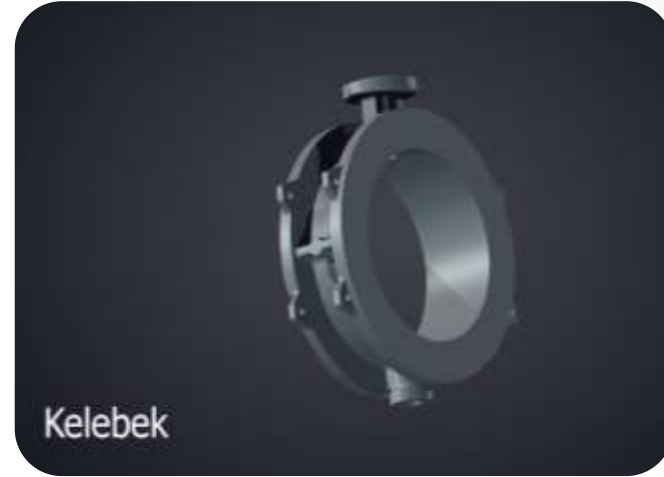


Kelebek

Butterfly Valve

Mud and Concrete Pump Industry

Different sizes of valve body covers and discs, separator parts are produced.



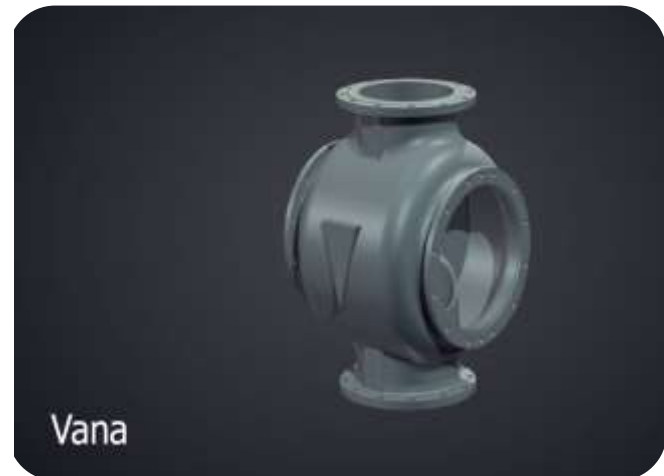
Butterfly Valve



Butterfly Valve



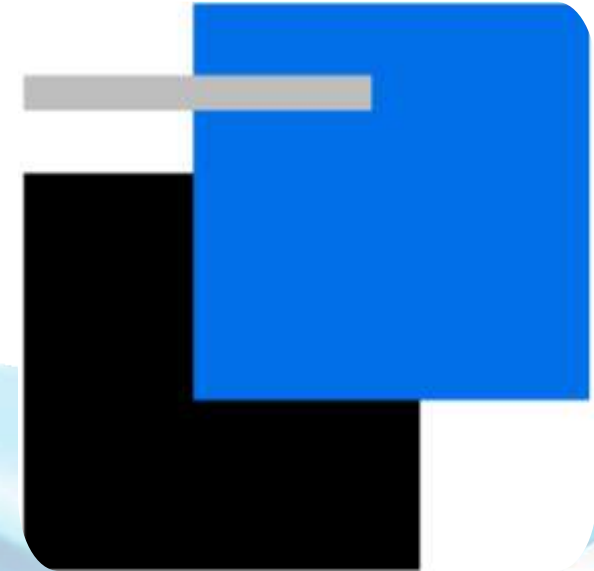
Butterfly Valve



Valve



Butterfly Valve



Energy Sector

We are with you in all your energy investments with our wide product range consisting of coal mill wear plates, high impact hammers, ash conveying chains, pipes and discs, as well as bollards, rings, wheels, rope pulleys and various valves for use in the maritime sector.

Energy Sector

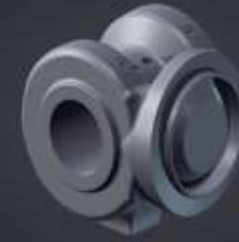
Energy Sector

We are with you in all your energy investments with our wide product range consisting of coal mill wear plates, high impact hammers, ash conveying chains, pipes and discs, as well as bollards, rings, wheels, rope pulleys and various valves for use in the maritime sector.



Kelebek Vana

Butterfly Valve



Hidrolik Piston Kafası

hydraulic piston head



Hidrolik Piston Kafası

hydraulic piston head



Kelebek Vana

Butterfly Valve

Energy Sector

Energy Sector

Kömür değirmenleri aşınma plakaları, yüksek darbe dayanımlı çekişler, kül sevk zincirleri, boruları ve diskler ve aynı zamanda denizcilik sektöründe kullanılmak üzere iskele babaları, ring, teker, halat makarası ve çeşitli vanalardan oluşan geniş ürün yelpazemizle, her türlü enerji yatırımınızda yanınızdayız.



Çöp Yakma Izgarası

garbage incinerator



Giriş Çıkış Ağızı

inlet outlet



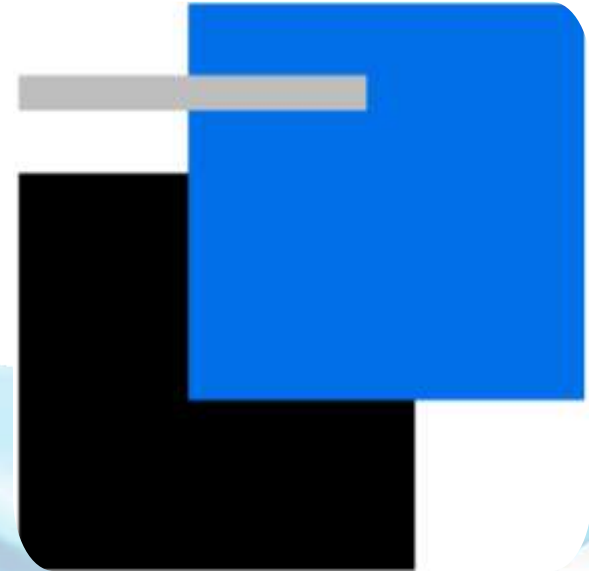
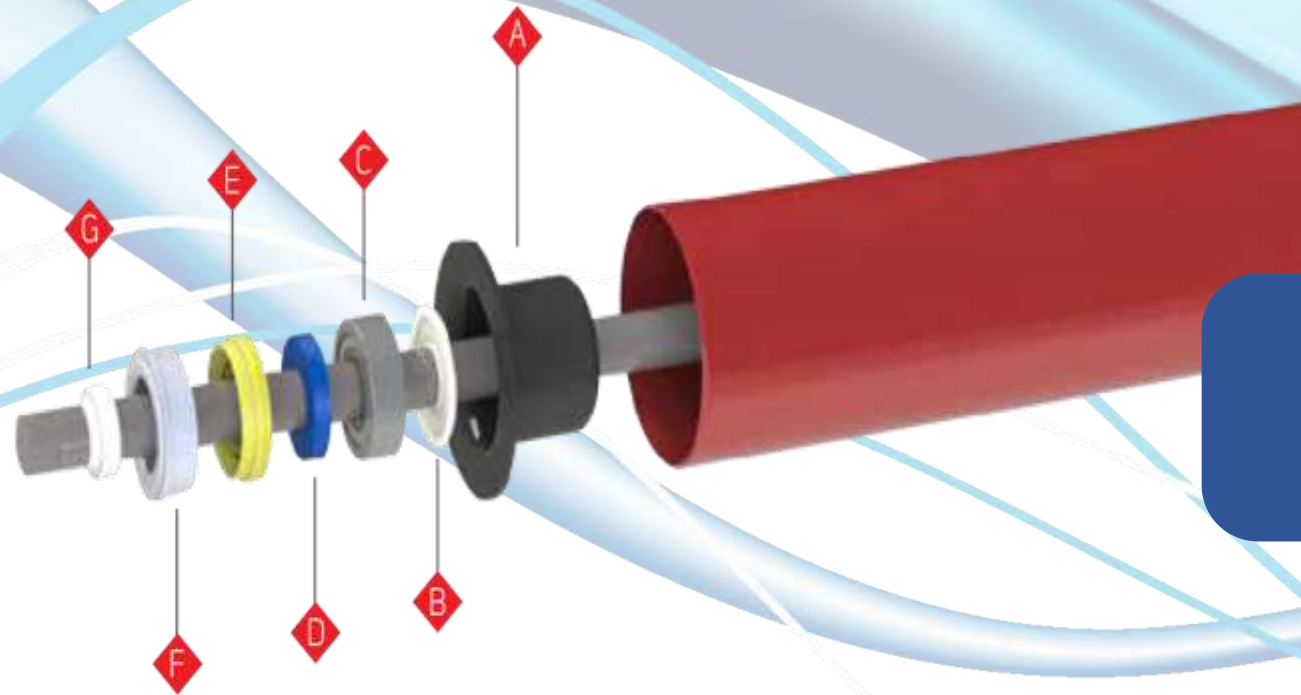
Hidrolik Piston Kafası

hydraulic piston head



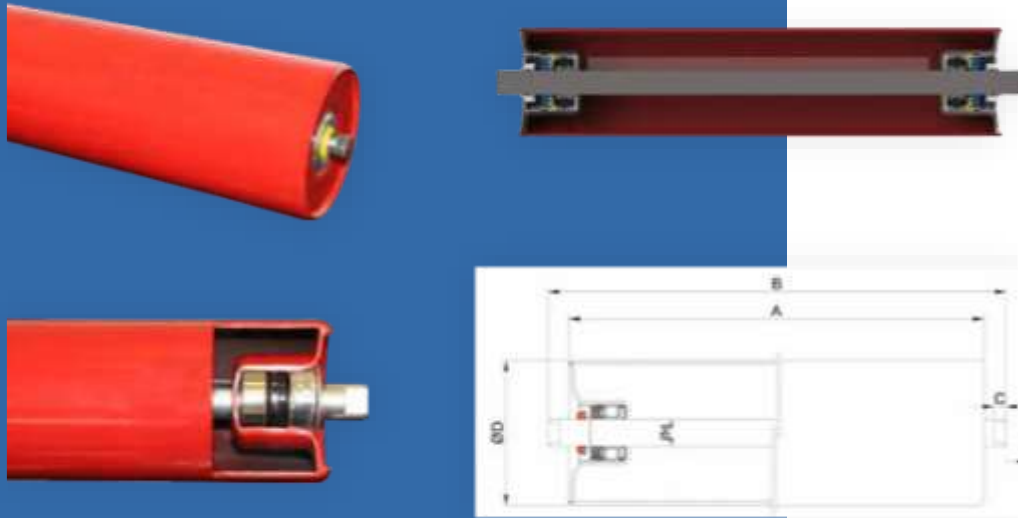
Fan

fan



Conveyor **Roller**

Product Carrier Roller



They can be used for transporting a wide variety of loads, conveying and transferring materials on machinery and assembly lines. Piece goods, angular or cylindrical goods, boxed, packaged products can be transported horizontally or inclined.

The products are conveyed on rollers placed at regular intervals on the conveyor frame. They are divided into two as driven and free-rolled according to the way they work.

Material transport in free roller conveyors is provided by height difference, first speed system, human or machine pushing power. In these conveyors, the force is applied directly to the load. The rollers rotate with the friction of the load making translational motion along the conveyor bed.

In driven roller conveyors, on the other hand, the rollers are driven by the chain running along the conveyor and working with the motor-reducer system. Driven conveyor rollers are rotated around their axis by a motor. The motion is transmitted to the transported trowel by friction.

The spacing of the rolls, the roll diameters and the material are also determined by the type of product to be transported. Galvanized, rubber or PVC coated rolls are designed for customer use. Usage area and capacity vary according to the purpose of use.

Product Carrier Roller

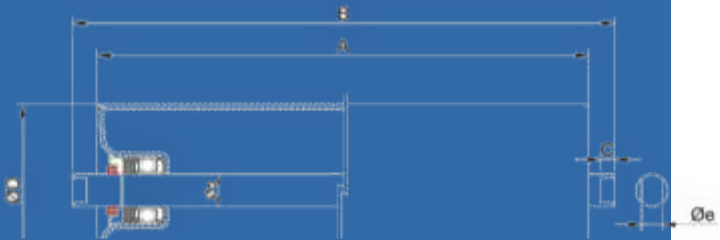
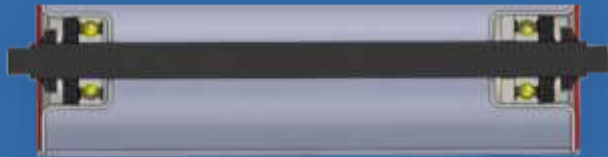
Shaft diameters are 12-15-20-25-30-40-50mm. Production is made up to 3000 mm wide belts. 6000 series bearings are used.



Bant Geniřliđi Band width	D	A1	A2	A3
300	63.5	380	200	
400	63.5	500	250	160
	89			
500	108	600	315	200
	63.5			
	89			
650	108	750	380	250
	133			
	63.5			
	89			
800	108	950	465	315
	133			
	89			
1000	108	1150	600	380
	133			
	159			
	89			
1200	108	1400	700	465
	133			
	159			
	89			

Locked Roller

They are rollers with special mechanism of our company, which do not turn against the direction of the belt, but only rotate in the direction of the belt, in order to alleviate the load on the drum during downtime in inclined conveyors and to prevent the belt from running back.



- * Shaft diameters are 12-15-20-25-30-40-50mm.
- * Production is made up to 3000 mm wide bands.
- * 6000 series bearings are used.

Bant Geniřliđi Band Width	D	A1	A2	A3
300	63,5	380	200	
400	63,5	500	250	160
	89			
500	108	600	315	200
	63,5			
	89			
650	108	750	380	250
	63,5			
	89			
800	108	950	465	315
	89			
	133			
1000	89	1150	600	380
	108			
	133			
	159			
1200	89	1400	700	465
	108			
	133			
	159			

Impact Roller

They are shock absorbing rolls with discs on the base, which resists and absorbs the pressure created by the materials falling on the belt, and whose basis consists of a steel roll design.

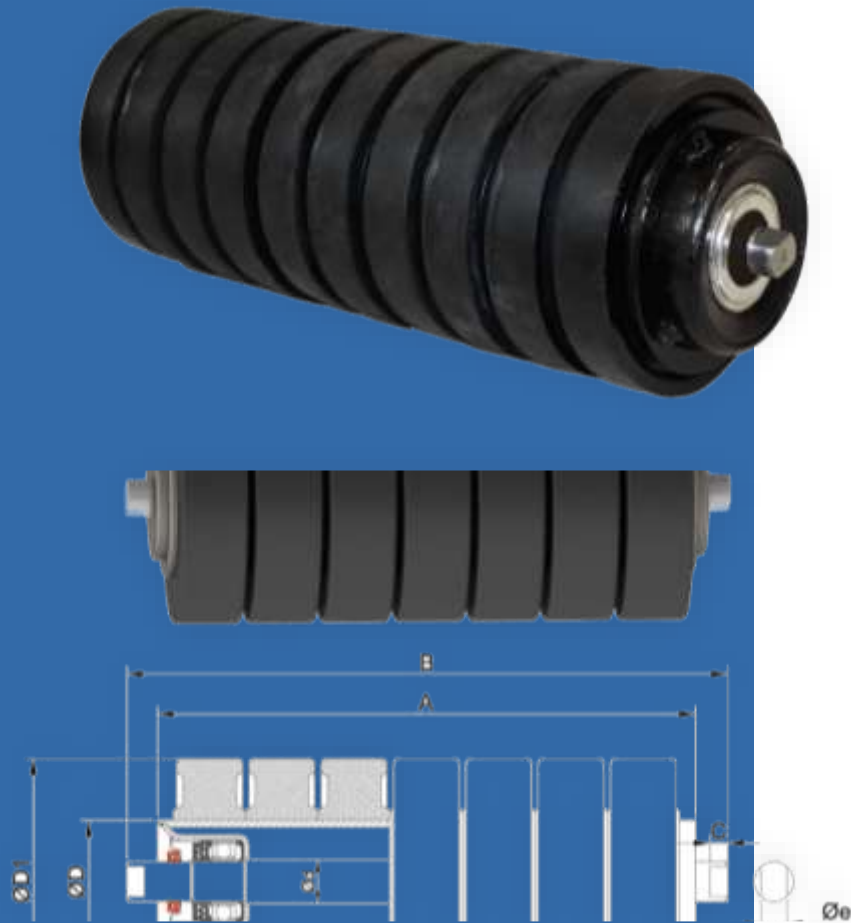
They can be used for transporting a wide variety of loads, conveying and transferring materials on machinery and assembly lines. Piece goods, angular or cylindrical goods, boxed, packaged products can be transported horizontally or inclined.

The products are conveyed on rollers placed at regular intervals on the conveyor frame. They are divided into two as driven and free-rolled according to the way they work.

Material transport in free roller conveyors is provided by height difference, first speed system, human or machine pushing power. In these conveyors, the force is applied directly to the load. The rollers rotate with the friction of the load making translational motion along the conveyor bed.

In driven roller conveyors, on the other hand, the rollers are driven by the chain that works with the motor-reducer system and circulates along the conveyor. Driven conveyor rollers are rotated around their axis by a motor. The motion is transmitted to the transported trowel by friction.

The spacing of the rolls, the roll diameters and the material are also determined by the type of product to be transported. Galvanized, rubber or PVC coated rolls are designed for customer use. Usage area and capacity vary according to the purpose of use.

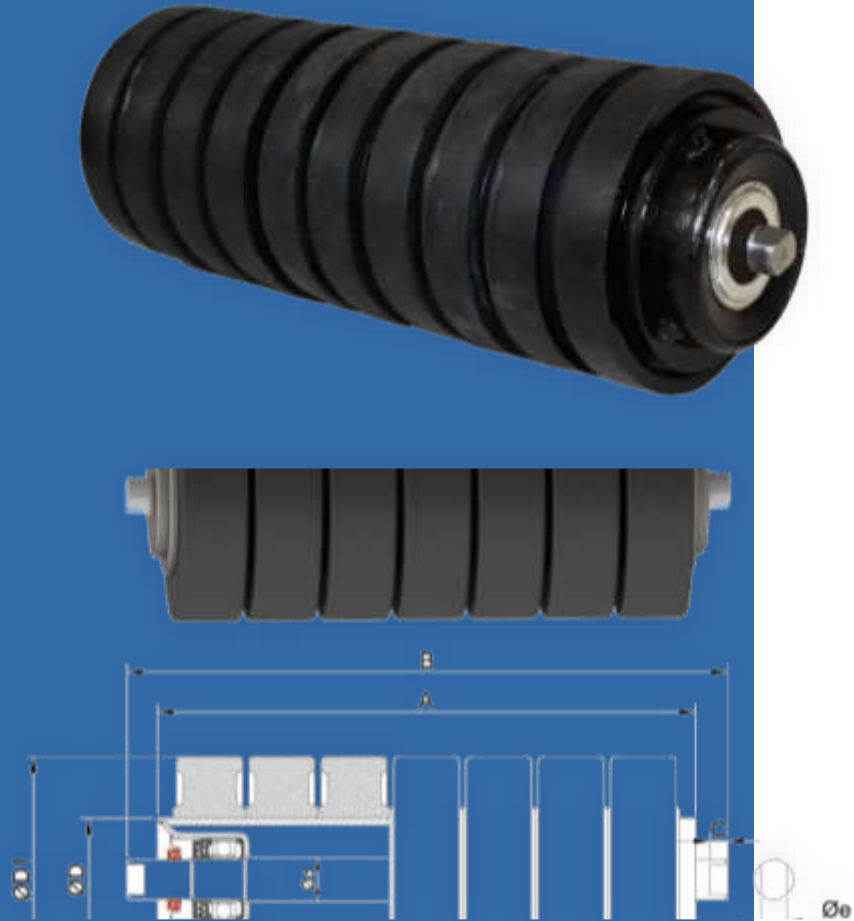


Impact Roller

* Shaft diameters are 12-15-20-25-30-40-50mm.

* Production is made up to 3000 mm wide bands.

* 6000 series bearings are used.



Bant Geniřliđi Band width	D	A1	A2	A3
300	63.5	380	200	
400	63.5	500	250	160
	89			
	108			
500	63.5	600	315	200
	89			
	108			
	133			
650	63.5	750	380	250
	89			
	108			
	133			
800	89	950	465	315
	108			
	133			
	159			
1000	89	1150	600	380
	108			
	133			
	159			
1200	89	1400	700	465
	108			
	133			
	159			

Return Roller

They are used to maintain and support the flow of the belt along the return line. They can be manufactured with rubber discs in case the transported material tends to stick to the tape or has a wear problem.

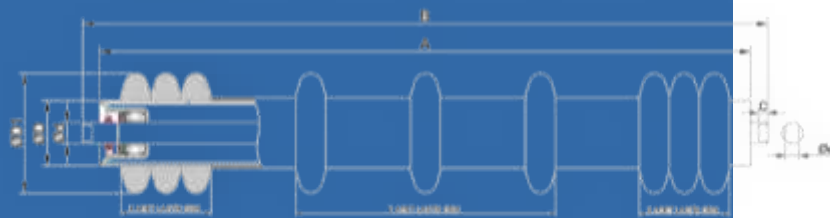
They can be used for transporting a wide variety of loads, conveying and transferring materials on machinery and assembly lines. Piece goods, angular or cylindrical goods, boxed, packaged products can be transported horizontally or inclined.

The products are conveyed on rollers placed at regular intervals on the conveyor frame. They are divided into two as driven and free-rolled according to the way they work.

Material transport in free roller conveyors is provided by height difference, first speed system, human or machine pushing power. In these conveyors, the force is applied directly to the load. The rollers rotate with the friction of the load making translational motion along the conveyor bed.

In driven roller conveyors, on the other hand, the rollers are driven by the chain that works with the motor-reducer system and circulates along the conveyor. Driven conveyor rollers are rotated around their axis by a motor. The motion is transmitted to the transported trowel by friction.

The spacing of the rolls, the roll diameters and the material are also determined by the type of product to be transported. Galvanized, rubber or PVC coated rolls are designed for customer use. Usage area and capacity vary according to the purpose of use.

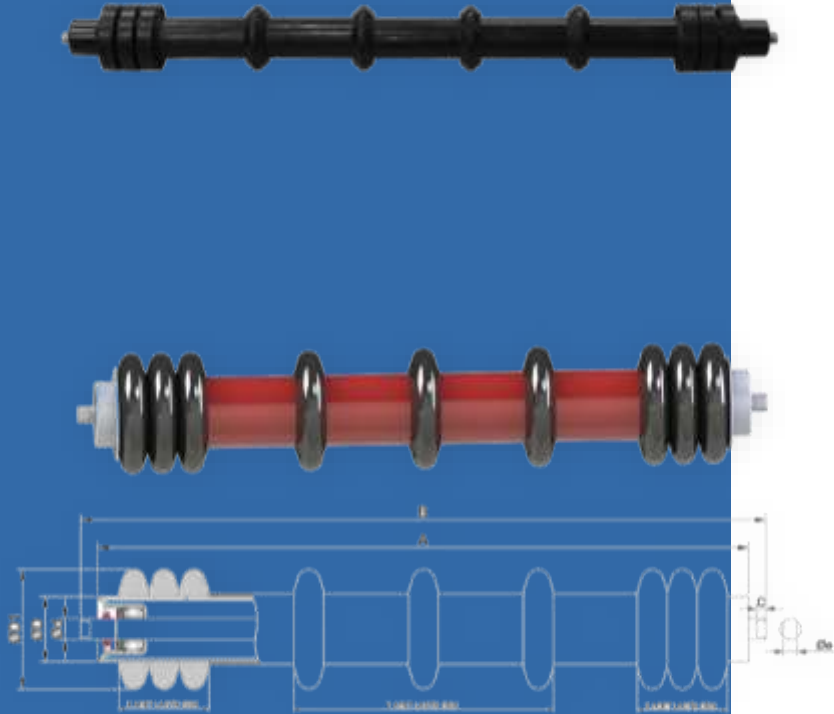


Return Roller

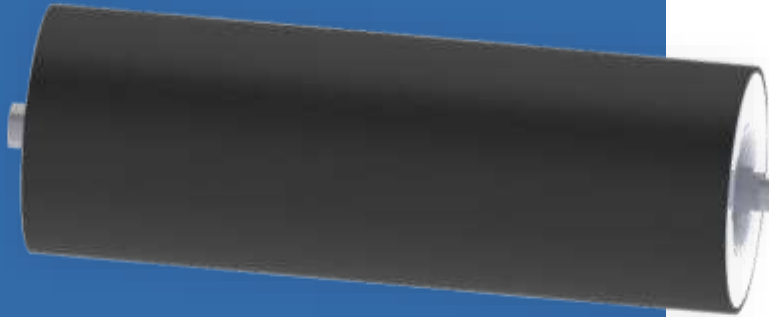
* Shaft diameters are 12-15-20-25-30-40-50mm.

* Production is made up to 3000 mm wide bands.

* 6000 series bearings are used.



Bant Geniřliđi Band width	D	A1	A2	A3
300	63,5	380	200	
400	63,5	500	250	160
	89			
	108			
500	63,5	600	315	200
	89			
	108			
	133			
650	63,5	750	380	250
	89			
	108			
	133			
800	89	950	465	315
	108			
	133			
	159			
1000	89	1150	600	380
	108			
	133			
	159			
1200	89	1400	700	465
	108			
	133			
	159			



Rubber Coated Roller

They are used to maintain and support the flow of the belt along the return line. They can be manufactured with rubber discs in case the transported material tends to stick to the tape or has a wear problem.

They can be used for transporting a wide variety of loads, conveying and transferring materials on machinery and assembly lines. Piece goods, angular or cylindrical goods, boxed, packaged products can be transported horizontally or inclined.

The products are conveyed on rollers placed at regular intervals on the conveyor frame. They are divided into two as driven and free-rolled according to the way they work.

Material transport in free roller conveyors is provided by height difference, first speed system, human or machine pushing power. In these conveyors, the force is applied directly to the load. The rollers rotate with the friction of the load making translational motion along the conveyor bed.

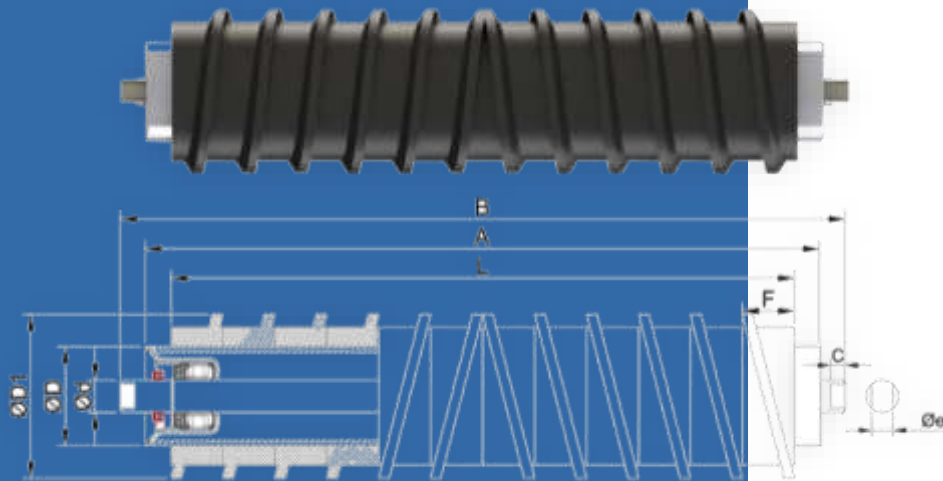
In driven roller conveyors, on the other hand, the rollers are driven by the chain that works with the motor-reducer system and circulates along the conveyor. Driven conveyor rollers are rotated around their axis by a motor. The motion is transmitted to the transported trowel by friction.

The spacing of the rolls, the roll diameters and the material are also determined by the type of product to be transported. Galvanized, rubber or PVC coated rolls are designed for customer use. Usage area and capacity vary according to the purpose of use.

Helical Disc Roller

Conveyor belt cleaning rolls. It cleans the materials adhered to the surface of the belt by rotating from the middle of the roll to the edge.

They can be used for transporting a wide variety of loads, conveying and transferring materials on machinery and assembly lines. Piece goods, angular or cylindrical goods, boxed, packaged products can be transported horizontally or inclined.



The products are conveyed on rollers placed at regular intervals on the conveyor frame. They are divided into two as driven and free-rolled according to the way they work.

Material transport in free roller conveyors is provided by height difference, first speed system, human or machine pushing power. In these conveyors, the force is applied directly to the load. The rollers rotate with the friction of the load making translational motion along the conveyor bed.

In driven roller conveyors, on the other hand, the rollers are driven by the chain that works with the motor-reducer system and circulates along the conveyor. Driven conveyor rollers are rotated around their axis by a motor. The motion is transmitted to the transported trowel by friction.

The spacing of the rolls, the roll diameters and the material are also determined by the type of product to be transported. Galvanized, rubber or PVC coated rolls are designed for customer use. Usage area and capacity vary according to the purpose of use.

Guide Roller

Vertical rolls with cantilever supported spindle that prevent and center the belt from slipping.

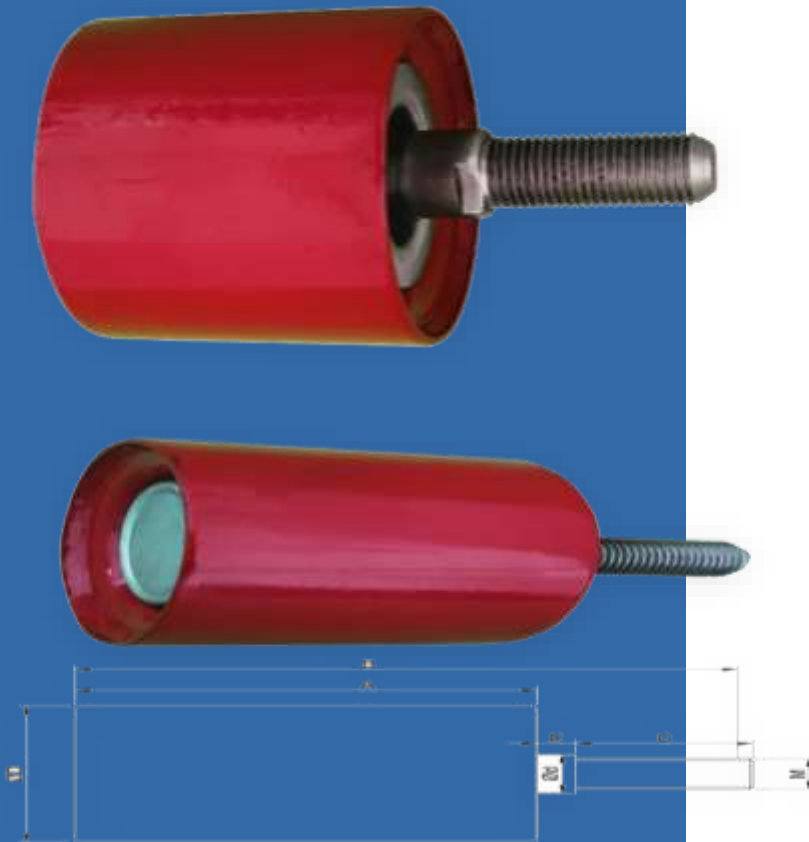
They can be used for transporting a wide variety of loads, conveying and transferring materials on machinery and assembly lines. Piece goods, angular or cylindrical goods, boxed, packaged products can be transported horizontally or inclined.

The products are conveyed on rollers placed at regular intervals on the conveyor frame. They are divided into two as driven and free-rolled according to the way they work.

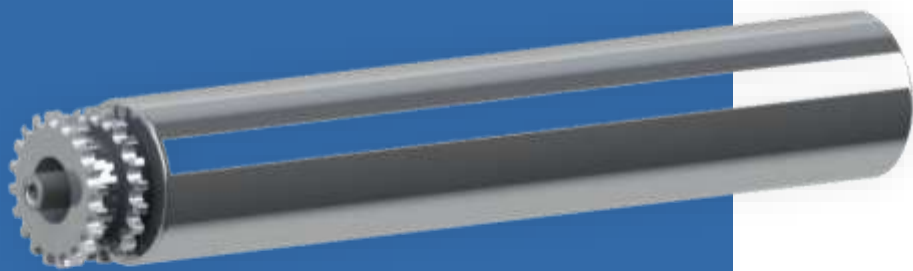
Material transport in free roller conveyors is provided by height difference, first speed system, human or machine pushing power. In these conveyors, the force is applied directly to the load. The rollers rotate with the friction of the load making translational motion along the conveyor bed.

In driven roller conveyors, on the other hand, the rollers are driven by the chain that works with the motor-reducer system and circulates along the conveyor. Driven conveyor rollers are rotated around their axis by a motor. The motion is transmitted to the transported trowel by friction.

The spacing of the rolls, the roll diameters and the material are also determined by the type of product to be transported. Galvanized, rubber or PVC coated rolls are designed for customer use. Usage area and capacity vary according to the purpose of use.



Sprocket Roller



It is the type of roll that transfers the movement from the motor to other rolls thanks to the gears.

Chain conveyors are generally used in pallet transport and special applications. The drive is given to the gear on which the chains are supported by a motor-reducer system. The project area of these conveyors is very flexible due to the mobility of the chain system. They are used in many areas from complicated elevator systems to the transportation of hanging clothes.

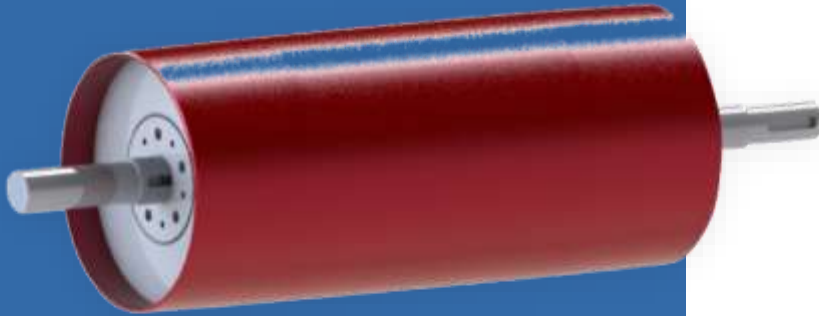
Cone Roller



It is generally preferred for heavy loads and is used to return the conveyor line.

Chain conveyors are generally used in pallet transport and special applications. The drive is given to the gear on which the chains are supported by a motor-reducer system. The project area of these conveyors is very flexible due to the mobility of the chain system. They are used in many areas from complicated elevator systems to the transportation of hanging clothes.

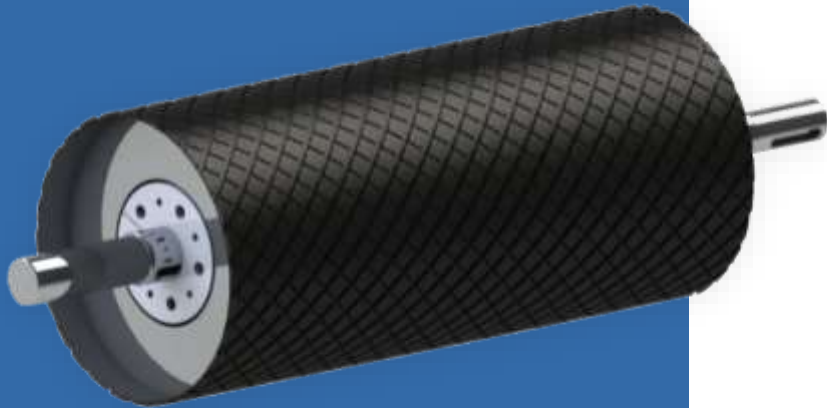
Tension Drum



Weighted tension drums ensure that the amount of tension needed for the conveyor belt is equally effective in all parts of the conveyor belt.

Chain conveyors are generally used in pallet transport and special applications. The drive is given to the gear on which the chains are supported by a motor-reducer system. The project area of these conveyors is very flexible due to the mobility of the chain system. They are used in many areas from complicated elevator systems to the transportation of hanging clothes.

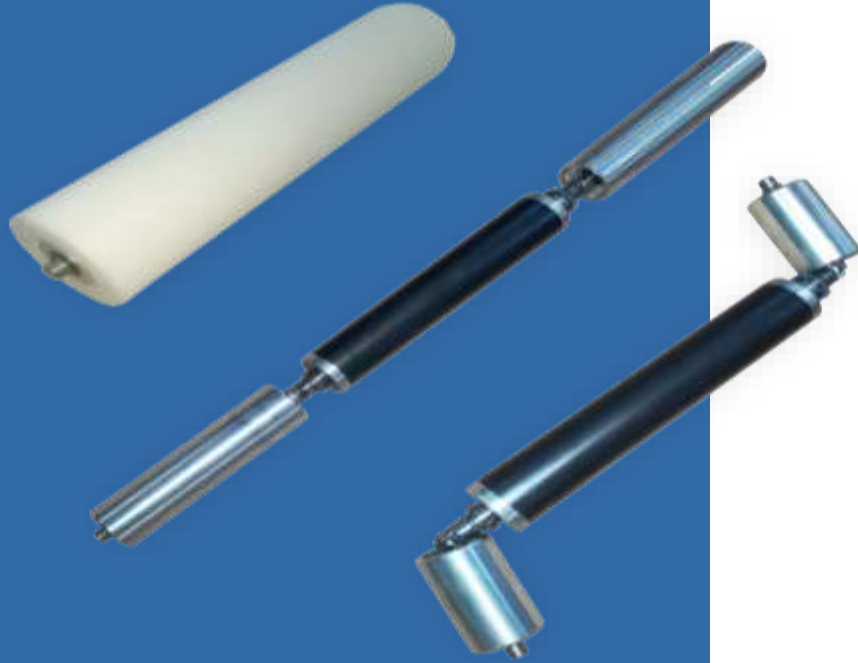
Drive Drum



Weighted tension drums ensure that the amount of tension needed for the conveyor belt is equally effective in all parts of the conveyor belt.

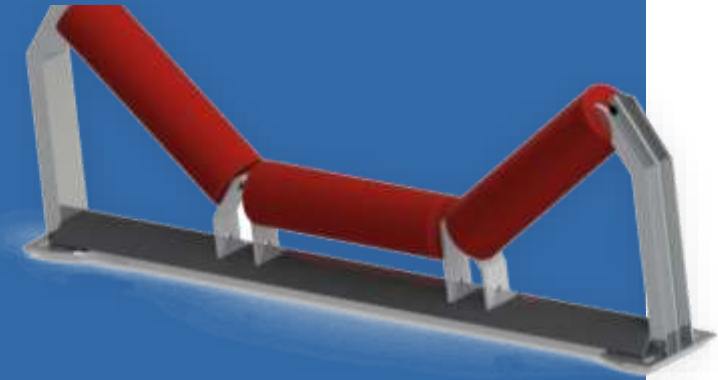
Chain conveyors are generally used in pallet transport and special applications. The drive is given to the gear on which the chains are supported by a motor-reducer system. The project area of these conveyors is very flexible due to the mobility of the chain system. They are used in many areas from complicated elevator systems to the transportation of hanging clothes.

Industrial **Roller**



It is used in transportation and packaging works in the factory. It is also used as machine equipment in factory production lines.

Conveyor Roller Stations



They are roll stations manufactured in various types that enable and support the conveyor belt to move stably on the system.



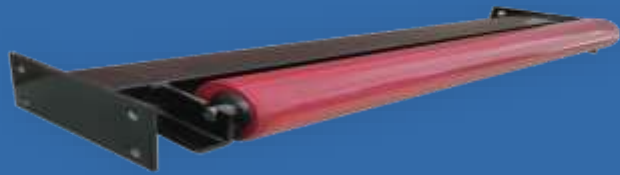
Impact Roller Station

These are the stations that are used to keep the products carried on the conveyor belts stable and to minimize the incoming impacts and are manufactured with various features.

Sliding Station



To be used in areas where assembly and maintenance is difficult, the sliding structure with rollers on a fixed body facilitates maintenance and assembly. If there is a load on the belt, we can additionally take the load of the belt with jack systems and make the aquaplaning movement easier. Skid stations can be manufactured in special sizes for each conveyor.



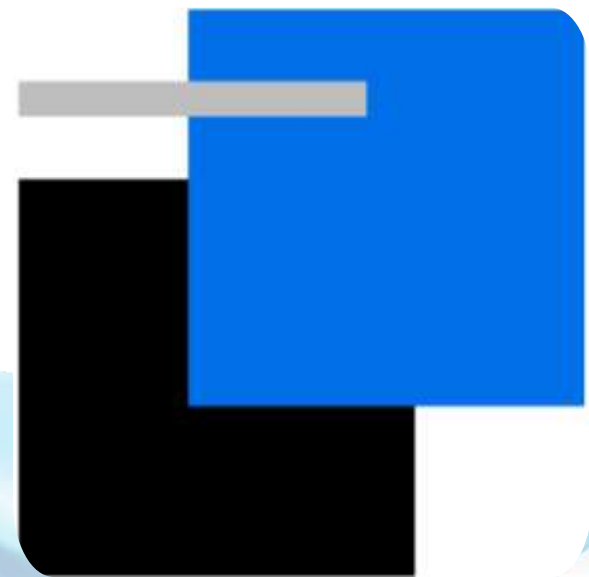
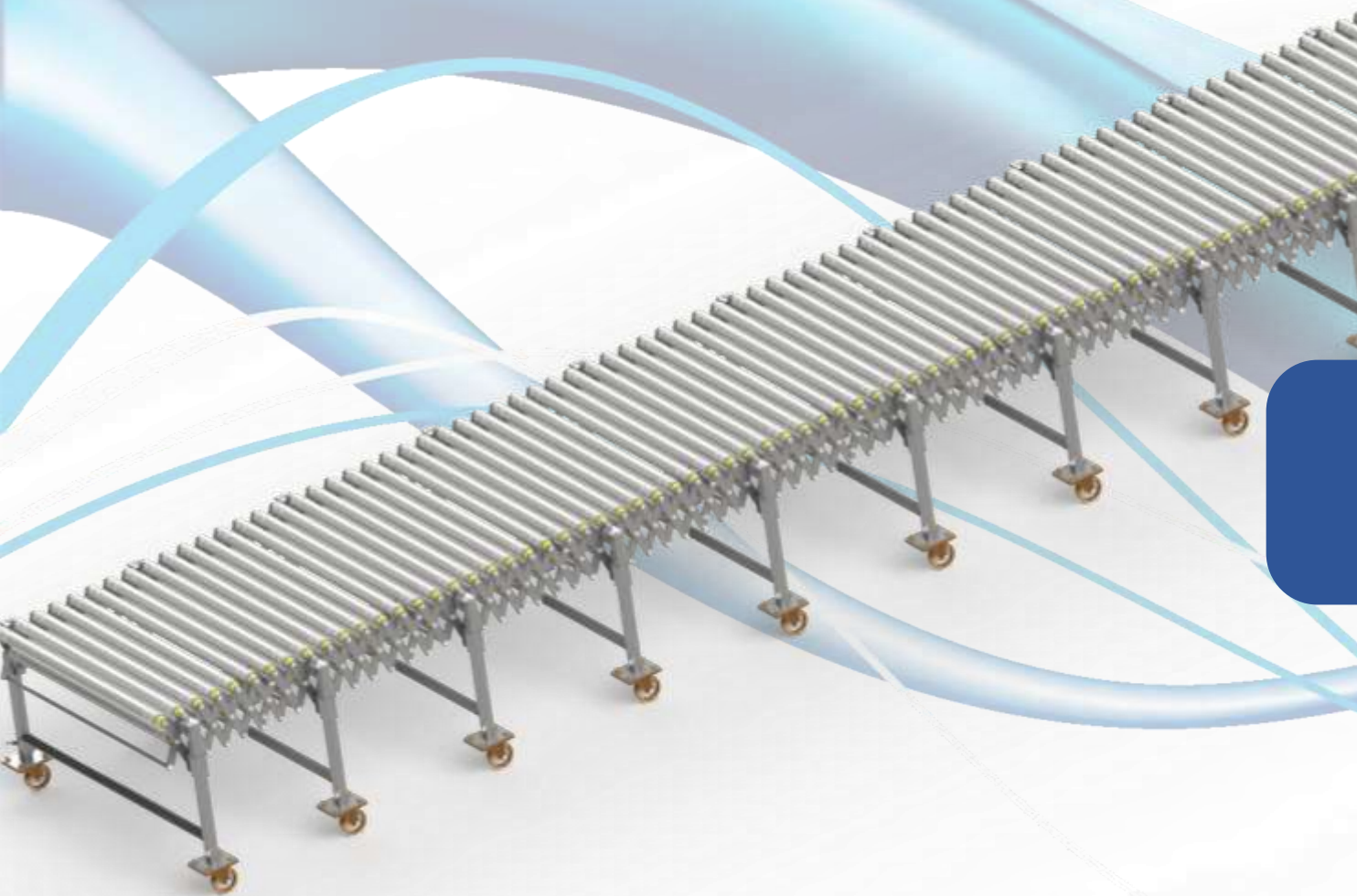
Return Roller **Stations**

Low and Up Setting Roller **Stations**



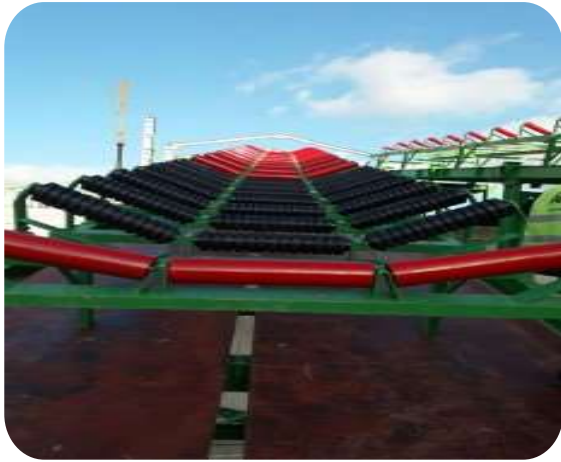
Roller and Station **Equipments**

- A. Bearing Housings
- B. Roller Suspension Feet
- C. Impact and Swing Discs
- D. Polyamide Bearings and Seals
- E. Special Press Printing, Deep Drawing and Mold Works



Conveyor Systems

Cement Factory



Sand Preparation Facility



Plaster Factory



Cement Factory



Paper Factory



Thermal Power Plant



Thermal Power Plant



Broken Glass Facility



Cement Factory Line



Ship Loading Line



Chamber of Commerce



Shopping Mall



Gymnasium



Fairground



TV Tower



Jump Ramps



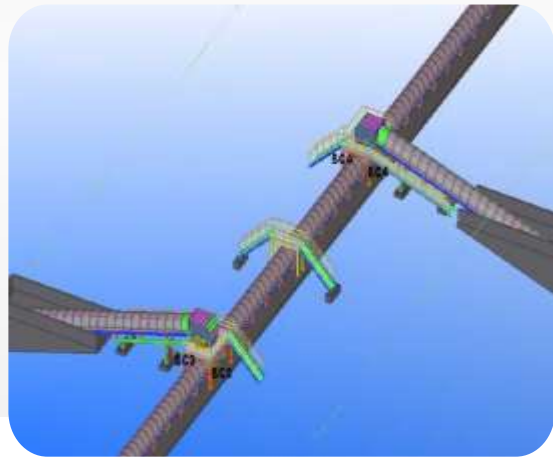
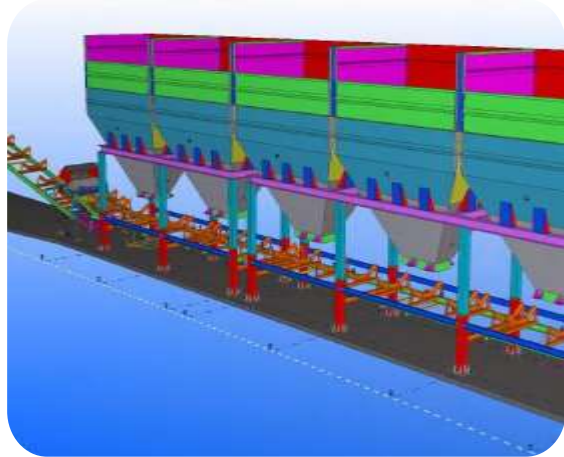
Shopping Mall

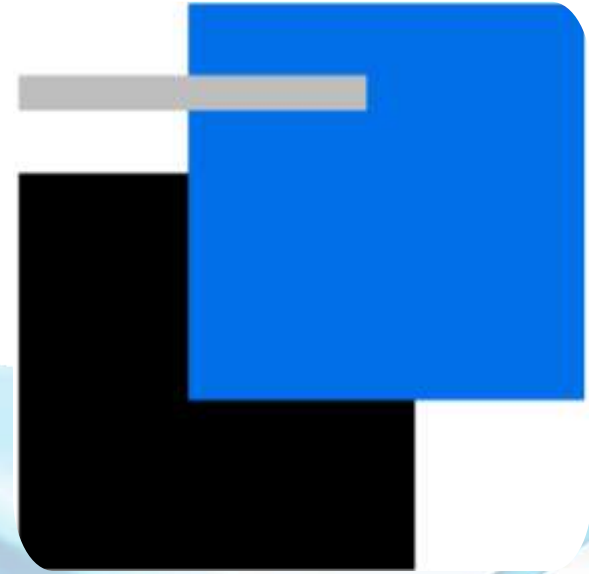
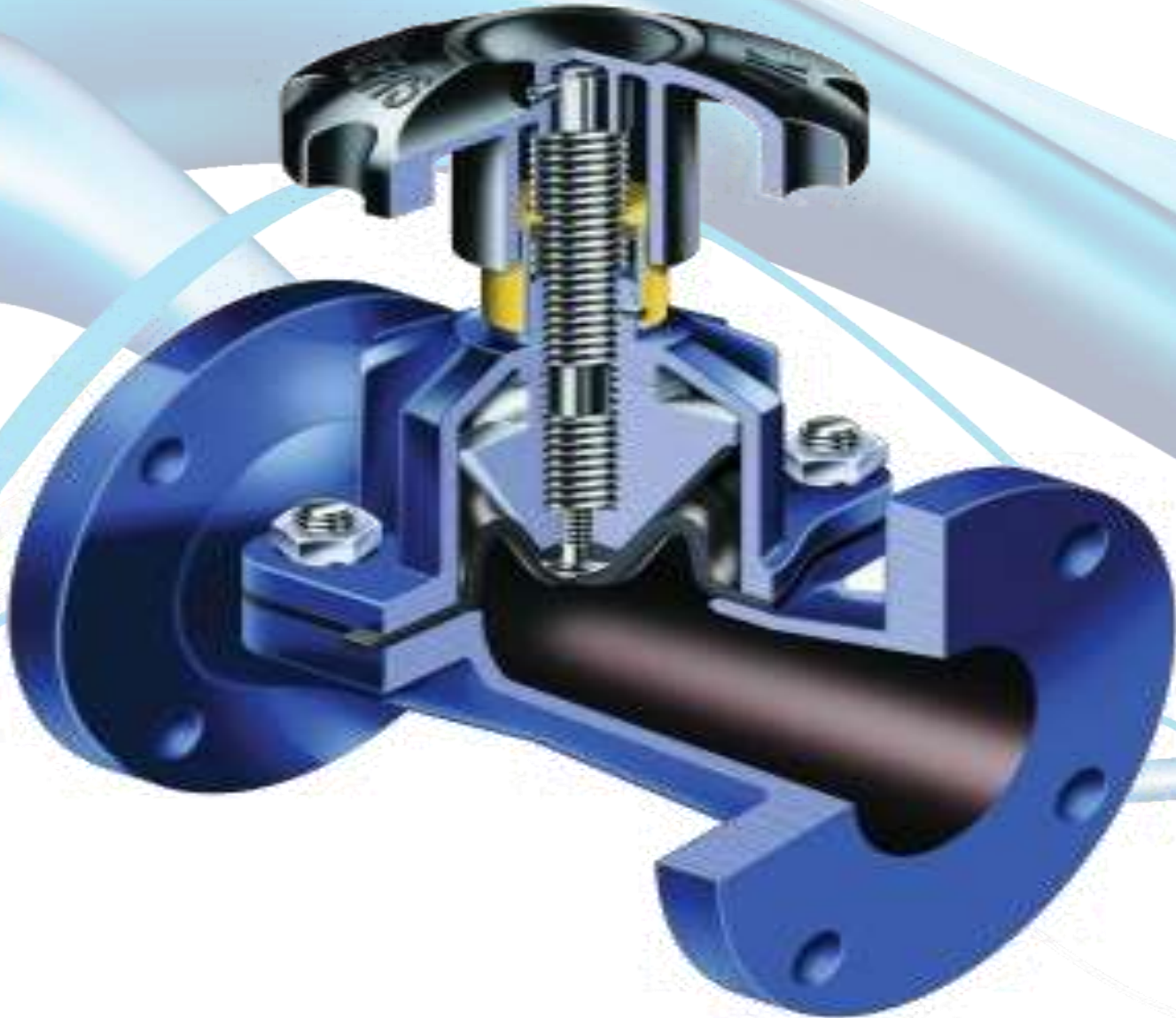


Hotel



Mechanical Modeling





Valves

Butterfly Valves

Butterfly valves fulfill their duties by cutting and opening the fluid passage by turning a flat disc, which is eccentrically or centered, by 90 degrees in the middle of the fluid passage hole.

Butterfly valves are not suitable for precise flow control. However, it also has many advantages. The advantages of butterfly valves are their lightness, mounting dimensions, costs compared to other types of valves, easy installation and maintenance, etc. We can count as



Wafer Butterfly Valves

DN32-DN2100,

- Pressure Class: PN 6 / 10 / 16 / 20 // Class 150 // ANSI 125 / 150,
- Body: Epoxy coating GGG40 / GGG40.3 / GSC25N / ASTM A216 WCB / CF8M / AISI 316L,
- Disc: GGG40 / CF8M / AISI 316L / AluBronze,
- Gasket: EPDM / H-EPDM / NBR / VITON / SILICONE / HYPALON / NEOPRENE,
- Control: Lever / Gearbox // Pneumatic / Electric / Hydraulic Actuator,
- Complies with EN 593 and API 609 standards.

Wafer type butterfly valves cannot be used as end-of-line valves according to API 609 standards.

Lug Butterfly Valves

DN32-DN2100,

- Pressure Class: PN 6 / 10 / 16 / 20 // Class 150 // ANSI 125 / 150,
- Body: Epoxy coating GGG40 / GGG40.3 / GSC25N / ASTM A216 WCB / CF8M / AISI 316L,
- Disc: GGG40 / CF8M, AISI 316L / AluBronze,
- Gasket: EPDM / H-EPDM / NBR / VITON / SILICONE / HYPALON / NEOPRENE,
- Control: Lever / Gearbox // Pneumatic / Electric / Hydraulic Actuator,
- Complies with EN 593 and API 609 standards.

Butterfly Valves

Butterfly valves fulfill their duties by cutting and opening the fluid passage by turning a flat disc, which is eccentrically or centered, by 90 degrees in the middle of the fluid passage hole.

Butterfly valves are not suitable for precise flow control. However, it also has many advantages. The advantages of butterfly valves are their lightness, mounting dimensions, costs compared to other types of valves, easy installation and maintenance, etc. We can count as



Double Flanged Concentric Butterfly Valves

DN50-DN2000,

- Pressure Class: PN 10 / 16 // ANSI 125 / 150,
- Body: Epoxy coating GGG50,
- Disc: Epoxy coated GGG50 / CF8M / AISI 316,
- Gasket: EPDM / NBR / Viton,
- Control Type: With Arm / Gearbox // Pneumatic / Electric / Hydraulic Actuator,
- Compliant with TS EN 593 standard.

Double Flanged Double Eccentric Butterfly Valves

DN100-DN2000,

- Pressure Class: PN 6 / 10 / 16 // ANSI 150,
- Body: Epoxy coating GGG50,
- Disc: Epoxy coated GGG50 / CF8M / AISI 316,
- Gasket: EPDM / NBR / Viton,
- Control Type: With Arm / Gearbox // Pneumatic / Electric / Hydraulic Actuator,
- Conforms to TS EN 593 / API 609 / AWWA C504 standard.

Butterfly Valves

Butterfly valves fulfill their duties by cutting and opening the fluid passage by turning a flat disc, which is eccentrically or centered, by 90 degrees in the middle of the fluid passage hole.

Butterfly valves are not suitable for precise flow control. However, it also has many advantages. The advantages of butterfly valves are their lightness, mounting dimensions, costs compared to other types of valves, easy installation and maintenance, etc. We can count as



Double Flanged Triple Eccentric Butterfly Valves

DN50-DN2000,

- Pressure Class: PN 6 / 10 / 16 // ANSI 150,
- Body: Epoxy coating GGG50,
- Disc: Epoxy coated GGG50 / AISI 316,
- Gasket: EPDM / NBR / Viton,
- Control Type: With Arm / Gearbox // Pneumatic / Electric / Hydraulic Actuator,
- Conforms to TS EN 593 / API 609 standard.

High Performance Butterfly Valves

DN50-DN1200,

- Pressure Class: PN 16 / 25 // Class 150 / 300,
- Body: ASTM A216 WCB / CF8M / AISI 316,
- Disc: ASTM A216 WCB / CF8M / AISI 316,
- Gasket: PTFE,
- Control: Lever / Gearbox // Pneumatic / Electric / Hydraulic Actuator,
- Conforms to API 609 standard.

Butterfly Valves

Butterfly valves fulfill their duties by cutting and opening the fluid passage by turning a flat disc, which is eccentrically or centered, by 90 degrees in the middle of the fluid passage hole.

Butterfly valves are not suitable for precise flow control. However, it also has many advantages. The advantages of butterfly valves are their lightness, mounting dimensions, costs compared to other types of valves, easy installation and maintenance, etc. We can count as



Two Piece with PTFE (Teflon) Gasket

Butterfly Valves

DN50-DN300,

- Pressure Class: PN 6 / 10 / 16 // Class 150,
- Body: Epoxy coating GGG40 / GGG40.3 / GSC25N / ASTM A216 WCB / AISI 316,
- Disc: AISI 316L / 3 mm PTFE coated CF8M / AISI 316,
- Gasket: EPDM / NBR / PTFE with Viton bottom support,
- Control Type: With Arm / Gearbox // Pneumatic / Electric / Hydraulic Actuator,
- Conforms to TS EN 593 / API 609 standard.

Vulcanized Rubber Lug Butterfly Valves

DN50-DN1200,

- Pressure Class: PN 10 / 16 // Class 150 // ANSI 125 / 150,
- Body: Epoxy Coating ASTM A216 WCB / GGG40.3 / GGG40 / CF8M / AISI 316,
- Disc: Epoxy Coating GGG40 / GGG40.3 / CF8M / AISI 316 / AluBronze,
- Gasket: EPDM / NBR,
- Control Type: Lever / Gearbox // Pneumatic / Electric / Hydraulic Actuator,
- Conforms to TS EN 593 / API 609 standard.
- With the vulcanization method, the tire and valve body are produced as an inseparable whole,
- They show high performance especially in vacuum lines,
- Valves with vulcanized rubber are also suitable for use in lines where standard rubber-sealed butterfly valves are used, and in natural gas lines,
- Different color alternatives are available depending on the usage situation.



Ball Valves

Ball Valves are designed and manufactured to address various purposes in many different sectors. They allow easy passage of fluid and are designed to allow flow from both directions. Its biggest advantage is that the pressure losses are very low. They adapt to different control types such as lever, reducer, actuator.



Flanged 2-Piece Ball Valves

- DN15-DN300,
- Pressure Class: PN 16 / 25 / 40 // Class 150 / 300,
 - Body: GGG40 Epoxy coated / ASTM A216 WCB / CF8M / AISI 316,
 - Sphere: AISI 316 / CF8M / ASTM A216 WCB + Cr,
 - Shaft: AISI 416 / AISI 420 / AISI 316,
 - Sphere Seat: PTFE // Glass fiber / Carbon reinforced PTFE,
 - Fire Safe,
 - Control Type: Arm / Geared // Pneumatic / Electric Actuated,
 - Compliant with TS EN 3108 / TS EN 1983 / ASME B16.34 standards,
 - Dimensions: According to DIN 558-1,
 - Connections: According to DIN EN 1092-2,
 - Full Pass (Reduce Bore on request),
 - Double-sided perfect sealing,
 - Easy maintenance,
 - It shows superior performance in all difficult conditions and fluids.



Monoblock Wafer Ball Valves

- DN15-DN200,
- Pressure Class: PN 10 / 25 / 40,
 - Body & Cover: ASTM A-105 / ASTM A216 WCB / CF8M / AISI 316 / AluBronze,
 - Sphere: CF8M / AISI 316 / AluBronze,
 - Fire Safe,
 - Control Type: Lever / Gearbox // Pneumatic / Electric Actuator,
 - Connection: ISO 5211 top flange connection standard,
 - Conforms to ASME B16.5 standard,
 - Occupies less space in the process lines thanks to their compact structure,
 - Natural Gas, LNG-LPG, Fuel-Oil,
 - In the shipbuilding sector,
 - It is used in storage facilities.

Ball Valves

Ball Valves are designed and manufactured to address various purposes in many different sectors. They allow easy passage of fluid and are designed to allow flow from both directions. Its biggest advantage is that the pressure losses are very low. They adapt to different control types such as lever, reducer, actuator.



Two / Three Piece Threaded Ball Valves

- DN15-DN50,
- Pressure Class: PN63,
 - Body & Cover: ASTM A105 / AISI 316,
 - Sphere: ASTM A-105 / AISI 316,
 - Control Type: Arm,
 - Compliant with TS EN 331 standard,
 - Full passage, 2 and 3 piece body,
 - It is resistant to 1000 psi / 68 bar pressure.



Geothermal Ball Valves

- DN25-DN1000,
- Pressure Class: PN 16 / 25 / 40 // Class 150 / 300,
 - Body & Cover: St37 / St52,
 - Sphere: ASTM A-105 + Chrome plated / CF8M / AISI 316,
 - Conforms to ASME B16,34 standard,
 - Corrosion resistant special coating,
 - Closed system with special design and welding combination,
 - It is used in underground geothermal and closed line transmission systems.

Ball Valves

Ball Valves are designed and manufactured to address various purposes in many different sectors. They allow easy passage of fluid and are designed to allow flow from both directions. Its biggest advantage is that the pressure losses are very low. They adapt to different control types such as lever, reducer, actuator.



Floating / Trunnion Flanged Ball Valves

DN50-DN900,

- Class 150: DN50-DN150 Floating sphere Floating, DN200-DN300 Double bearing Trunnion,
- Class 300 / 600 / 900: DN50-DN900 Double bearing Trunnion,
- Class 1500: DN50-DN800 and Class 2500: DN50-DN600 Double bearing Trunnion,
- Pressure Class: Class 150 / 300 / 600 / 900 / 1500 / 2500,
- Body & Cover: ASTM A216 WCB / ASTM A-105 / CF8M / AISI 316,
- Sphere: ASTM A-105 / ASTM A-105 + Chrome plated / CF8M / AISI 316,
- Control Type: With Arm / Gearbox // Pneumatic / Electric / Hydraulic Actuator,
- Complies with ISO 14313 / API 6D / ASME B16,34 standards,
- Full Pass (Reduce Bore when requested),
- Double-sided sealing thanks to the trunnion mounting feature,
- Production in line with customer specifications,
- They show superior performance under difficult conditions in Oil and Natural Gas lines.



Welded Oil and Natural Gas Ball Valves

DN50-DN750,

- Pressure Class: Class 150 / 300 / 600 / 900 / 1500 / 2500 : Double bearing Trunnion,
- Body & Cover: ASTM A216 WCB (option for Class 150) / ASTM A105,
- Sphere: ASTM A-105 / ASTM A-105 + Chrome plated / CF8M / AISI 316,
- Control Type: Arm // Side Control / Top Control Gearbox // Electric / Hydraulic Actuated,
- Complies with ISO 14313 / API 6D / ASME B16,34 standards,
- Full Pass (Reduce Bore when requested),
- Double-sided sealing thanks to the Trunnion Mounted feature,
- Suitable for underground and aboveground use,
- Production in line with customer specifications,
- It shows superior performance in Oil and Natural Gas lines, urban gas distribution lines and stations, suitable for underground and aboveground use and in harsh conditions.

Ball Valves

Ball Valves are designed and manufactured to address various purposes in many different sectors. They allow easy passage of fluid and are designed to allow flow from both directions. Its biggest advantage is that the pressure losses are very low. They adapt to different control types such as lever, reducer, actuator.



Top Entry Ball Valves

DN50-DN750,

- Pressure Class: Class 150 / 300 / 600 / 900 : Floating sphere Floating / Double bearing Trunnion,
- Body & Cover: ASTM A-105 / ASTM A216 WCB / CF8M / AISI 316,
- Sphere: ASTM A105 / CF8M / AISI 316,
- Control Type: Lever // Pneumatic / Electric / Hydraulic Actuated,
- Complies with ISO 14313 / API 6D / ASME B16.34 standards,
- One-piece valve body that includes all moving parts,
- Top entry design,
- High impermeability, high resistance to high pressure and temperatures,
- It provides one day repair and maintenance opportunity on the line.

Threaded / Socket Welded Class 800 Ball Valves

DN15-DN50,

- Pressure Class: Class 800,
- Body & Cover: ASTM A105 / AISI 316,
- Sphere: ASTM A105 / AISI 316,
- Control Type: Arm,
- Conforms to ASME B16.11 / ASME B1.20.1 standards.

Ball Valves

Ball Valves are designed and manufactured to address various purposes in many different sectors. They allow easy passage of fluid and are designed to allow flow from both directions. Its biggest advantage is that the pressure losses are very low. They adapt to different control types such as lever, reducer, actuator.



Double Block and Bleed Ball Valves

DN50-DN300,

- Class 150: DN50-DN150 Floating sphere Floating, DN200-DN300 Double bearing Trunnion,
- Class 300 / 600: DN50-DN300 Double bearing Trunnion,
- Pressure Class: Class 150 / 300 / 600,
- Body & Cover: ASTM A216 WCB / ASTM A-105 / CF8M / AISI 316,
- Sphere: ASTM A-105 / ASTM A-105 + Chrome plated / CF8M / AISI 316,
- Control Type: With Arm / Gearbox // Pneumatic / Electric / Hydraulic Actuator,
- Complies with ISO 14313 / API 6D / ASME B16,34 standards,
- Ease of assembly and maintenance,
- It is used in Oil and Natural Gas lines, in applications that require double safety and high performance.



Casting Gate Valves

DN50-DN900,

- Class 150 / 300: DN50-DN900,
- Class 600: DN50-DN600,
- Class 900 / 1500: DN50-DN400,
- Class 2500: DN50-DN300,
- Pressure Class: Class 150 / 300 / 600 / 900 / 1500 / 2500,
- Body & Cover: ASTM A216 WCB / CF8M / AISI 316,
- Slide & Interior: Trim 1-12,
- NRS - Non-Rising National,
- Conforms to API 600 / ASME B16.34 / BS 1414 standards,
- It is used in circuits that require full opening and full closing,
- They provide smooth flow in fully open position,
- Local pressure loss is very low,
- Gate Valves are not used for throttling and flow adjustment purposes.



Forged Gate Valves

DN15-DN50,

- Pressure Class: Class 150 / 300 / 600 / 900 / 1500 / 2500,
- Body: ASTM A105,
- Slide & Interior: Trim 1-12,
- NRS - Non-Rising National,
- Conforms to API 602 / ASME B16.34 / BS 1414 standards,
- They are used in circuits that require full opening and closing,
- They provide smooth flow in fully open position,
- Local pressure loss is very low,
- Gate Valves are not used for throttling and flow adjustment purposes.

Gate Valves

Gate Valves are used in circuits that require full opening and full closing. They provide smooth flow in fully open position. The local pressure loss is very low. Gate Valves cannot be used for throttling and flow adjustment purposes.



With Blade Gate Valves

DN50-DN600,

- Pressure Class: PN 6 / 10,
- Body & Cover: GGG40 / ASTM A216 WCB / CF8M / AISI 316,
- Disc: AISI 304 / AISI 316,
- Control Type: Arm / Geared // Pneumatic / Electric Actuated,
- Conforms to ASME B16.5 connection standard.



Elastomer Coated Gate Valves

DN50-DN400,

- Pressure Class: PN 10 / 16 // ANSI 150,
- Body & Cover: GGG40,
- Bolt: GGG40 + EPDM / NBR,
- Control Type: Lever / Rising Shaft / Non-Rising Shaft,
- They comply with BS 5163 standard.

Gate Valves

Gate Valves are used in circuits that require full opening and full closing. They provide smooth flow in fully open position. The local pressure loss is very low. Gate Valves cannot be used for throttling and flow adjustment purposes.



Casting Globe Valves

DN15-DN600,

- Class 150 / 300: DN15-DN600,
- Class 600: DN50-DN400,
- Class 900: DN50-DN300,
- Pressure Class: Class 150 / 300 / 600 / 900,
- Body & Cover: ASTM A216 WCB / CF8M / AISI 316,
- Disc & Trim: Trim 1-12,
- RS - Rising Spindle,
- Conforms to BS 1873 / ASME B16.34 standards,
- Globe Valves are used for closing, throttling and adjustment purposes,
- Globe Valves create high flow resistance due to their working principle,
- They are valves suitable for frequent opening and closing.



Forged Globe Valves

DN15-DN50,

- Pressure Class: Class 150 / 1500 / 2500,
- Body & Cover: ASTM A105 / AISI316,
- Disc & Trim: Trim 1-12,
- RS - Rising Spindle,
- Conforms to BS 1873 / ASME B16.34 standards,
- Globe Valves are used for closing, throttling and adjustment purposes,
- Globe Valves create high flow resistance due to their working principle,
- They are valves suitable for frequent opening and closing.

Globe Valves

Globe Valves are used for closing, throttling and adjustment purposes. Globe valves create high flow resistance due to their working principle. They are valves suitable for frequent opening and closing.



Flanged / Welded Swing Check Valves

DN50-DN750,

- Class 150 / 300: DN50-DN750,
- Class 600 / 900: DN50-DN600,
- Class 1500 / 2500: DN50-400,
- Pressure Class: Class 150 / 300 / 600 / 900 / 1500 / 2500,
- Body: ASTM A216 WCB / CF8M / AISI 316,
- Valve & Interior: Trim 1-12,
- Complies with TS EN 12334 / ASME B16.34 / API 594 standards,
- Floating Type Check Valves are the best designed valves used to prevent backflow.



Forged Threaded / Socket Welded Swing Check Valves

DN15-DN50,

- Pressure Class: Class 150 / 300 / 600 / 900 / 1500,
- Body: ASTM A105,
- Valve & Interior: Trim 1-12,
- They comply with TS EN 12334 / ASME B16.34 / API 594 standards.

Check Valves

Check Valves are safety armatures produced to prevent the flow of fluid from returning. There are different types that can be used for all kinds of fluids.

It is important that the check valve is selected according to the flow rate it will pass, not the diameter of the pipe to which it will be connected.

The most important issue in check valves is to ensure that the flap moves smoothly and without getting stuck.

Flanged / Welded Piston (Lift) Check Valves



- DN15-DN300,
- Class 150 / 300: DN15-DN300,
 - Class 600 / 900: DN50-DN200,
 - Pressure Class: Class 150 / 300 / 600 / 900,
 - Body: ASTM A216 WCB / CF8M / AISI 316,
 - Valve: Trim 1-12,
 - They comply with TS EN 12334 / ASME B16.34 / API 594 standards.

Forged Threaded / Socket Welded Piston (Lift) Check Valves



- DN15-DN50,
- Pressure Class: Class 150 / 300 / 600 / 900 / 1500,
 - Body: ASTM A-105,
 - Valve: Trim 1-12,
 - Complies with TS EN 12334 / ASME B16,34 / API 594 standards.

Check Valves

Check Valves are safety armatures produced to prevent the flow of fluid from returning. There are different types that can be used for all kinds of fluids.

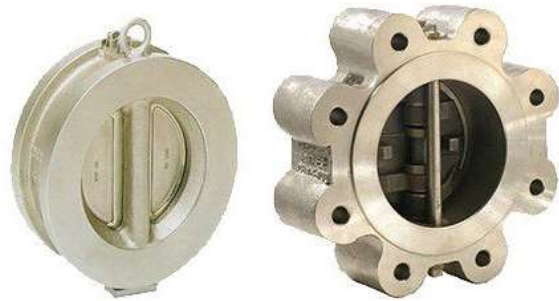
It is important that the check valve is selected according to the flow rate it will pass, not the diameter of the pipe to which it will be connected.

The most important issue in check valves is to ensure that the flap moves smoothly and without getting stuck.

Double Valve (Disc) Wafer / Lug Type Check Valves

DN50-DN600,

- Pressure Class: PN 10 / 16 // Class 150 / 300,
- Body & Disc: GGG40 / ASTM A216 WCB / CF8M / AISI 316,
- They comply with TS EN 12334 / ASME B16.34 / API 594 standards.



Wafer Check Valves

DN50-DN900,

- Pressure Class: Class 150 / 300 / 600 / 900 / 1500,
- Body: ASTM A105 / AISI 316,
- Valve: AISI 316,
- They comply with TS EN 12334 / ASME B16.34 / API 594 standards.



Check Valves

Check Valves are safety armatures produced to prevent the flow of fluid from returning. There are different types that can be used for all kinds of fluids.

It is important that the check valve is selected according to the flow rate it will pass, not the diameter of the pipe to which it will be connected.

The most important issue in check valves is to ensure that the flap moves smoothly and without getting stuck.

Spring (Disco) Type Wafer Check Valves

DN50-DN200,

- Pressure Class: Class 150 / 300,
- Body & Disc: ASTM A216 WCB / CF8M / AISI 316,
- They comply with TS EN 12334 / ASME B16.34 / API 594 standards.



Check Valves

Check Valves are safety armatures produced to prevent the flow of fluid from returning. There are different types that can be used for all kinds of fluids.

It is important that the check valve is selected according to the flow rate it will pass, not the diameter of the pipe to which it will be connected.

The most important issue in check valves is to ensure that the flap moves smoothly and without getting stuck.

Plug Valves

Plug valves fulfill their duties by cutting and opening the fluid passage by turning a conical or cylindrical part with a hole in the middle and a conical or cylindrical part perpendicular to the flow axis by 90 degrees and turning the hole(s) open or closed to the passage.



Lubricated / Unlubricated Flanged Plug Valves

DN50-DN300,

- Pressure Class: Class 150 / 300 / 600,
- Body & Cover: GGG40 / ASTM A216 WCB / CF8M / AISI 316,
- They comply with API 599 / ASME B16.34 standards.



PFA Lined Flanged Plug Valves

DN50-DN300,

- Pressure Class: Class 150 / 300 / 600,
- Body & Cover: GGG40 / ASTM A216 WCB / CF8M / AISI 316,
- They comply with API 599 / ASME B16.34 standards.

Scumbags

T and Y type strainers are used to filter impurities in pipelines and ensure long-lasting operation of other equipment in the system.



T Type Scumbags

DN50-DN600,

- Pressure Class: PN 10 / 16 // Class 150,
- Body & Cover: St37 / St52,
- Compliant with TS 11494 standard,
- They are used for filtering foreign materials in pipelines,
- They ensure the long-lasting operation of other equipment in the system.



Y Type Scumbags

DN50-DN500,

- Pressure Class: PN 10 / 16 // Class 150,
- Body & Cover: GGG40.3 / ASTM A216 WCB,
- Compliant with TS 11494 standard,
- They are used for filtering foreign materials in pipelines,
- They ensure the long-lasting operation of other equipment in the system.

Hygiene Valves

Hygiene valves are especially used in the Food and Health Equipment industries with their types that are suitable for use in hygienic environments, provide 100% sealing, are sleeved and suitable for automation.



Hygienic Butterfly Valves

DN25-DN100,

- Pressure Class: PN 6 / 10,
- Body: AISI 304 / AISI 316,
- Disc: AISI 304 / AISI 316,
- Gasket: EPDM / NBR / Viton / Silicone,
- Connection Type: Welded / Threaded / Clamped,
- They comply with DIN 11850 standard.



Hygienic Check Valves

DN50-DN200,

- Pressure Class: Class 150 / 300,
- Body & Disc: ASTM A216 WCB / CF8M / AISI 316,
- They comply with DIN 11850 standard.

Hygiene Valves

Hygiene valves are especially used in the Food and Health Equipment industries with their types that are suitable for use in hygienic environments, provide 100% sealing, are sleeved and suitable for automation.



Hygienic Strainers

DN50-DN500,

- Pressure Class: PN 10 / 16 // Class 150,
- Body & Cover: GGG40.3 / ASTM A216 WCB.

Diaphragm Valves



Diaphragm Valves

Diaphragm valves; They fulfill their task by moving a membrane perpendicular to the flow direction and placing it on a sealing surface.

DN25-DN300,

- Pressure Class: PN 6 / 10 / 16,
- Diaphragm: NBR / EPDM / Viton / PTFE,
- Body & Cover: GGG40 / ASTM A216 WCB / CF8M / AISI 316,
- They comply with ASME B16.5 standard.

Electric Actuators



Electric Actuators are produced as 24V DC, 1 Ph 110V AC, 1Ph 230V AC, 3Ph 380V AC. Standard type o-ring sealing and water resistance according to IEC IP67 NEMA 4 and 6 standard. Base mounting is according to ISO 5211 standard. The stem bushing is of the removable type to be machined to fit the valve stem. Actuator position on the valve; It can be selected in 4 different positions thanks to the 4 bolt holes on the shaft bush. Ambient heater inside the actuator; It prevents condensation and water accumulation that will occur as a result of weather and temperature changes. The standard 20W heater keeps all electrical parts in the actuator clean and dry at all times. The Limit Switch is activated by a simple but reliable glass mechanism placed on the middle column. Thanks to the simple adjustment of the switch mechanism, the valve position can be adjusted precisely and easily. The setting position is permanent and is not affected by over-travel caused by manual control. Cam actuated torque switches are easily adjustable to protect against overload. Although the gearbox flywheel mechanism is small in size, it provides high torque transfer with high efficiency and low noise level (max. 50 dB). Low recoil and long life are other advantages.

Thanks to the output torque values in the range starting from 60 Nm to 2500 Nm, it can be used in valves between 2"-24" sizes.

Accessories

Our accessories have been developed to provide solutions to all your processes.



Pneumatic Actuators

Pneumatic Actuators are produced in two types as Double Acting in the range of 7Nm-1300Nm (6 Bar) and Single Acting in the range of 14Nm-1200Nm (6 Bar). Our Pneumatic Actuators are 90 degree rotation and the body is made of hardened Aluminum, the piston and covers are made of Aluminum Injection and the shaft is made of Steel or Stainless Steel. Pneumatic Actuators provide On-Off and proportional control of valves and can be used with all valves we produce.

- Rotary Double Acting in the range of 7Nm-1300Nm (6 Bar),
- Rotary Single Acting in the range of 14Nm-1200Nm (6 Bar),
- ISO 5211 Standard Connection,
- Body, Piston & Covers: Hardened Aluminum,
- Shaft: Steel or Stainless Steel,
- With Position Indicator.

Accessories

Our accessories have been developed to provide solutions to all your processes.

Gearboxes

Gearboxes are produced in the range of 300 Nm to 4200 Nm output torque and can be used for valves of all sizes.

- 300Nm-4200Nm Maximum Output Torque,
- Body, Cover & Gear: GGG40,
- Shaft: ASTM 1045.



Solenoid Valve

- 1/4" / 5/2 & 3/2 Way,
- Single Coil Namur Solenoid Valve.



Accessories

Our accessories have been developed to provide solutions to all your processes.

Limit Switch Box

- Body: PVC,
- Mechanical / Proximity Limit Switch,
- With Position Indicator.



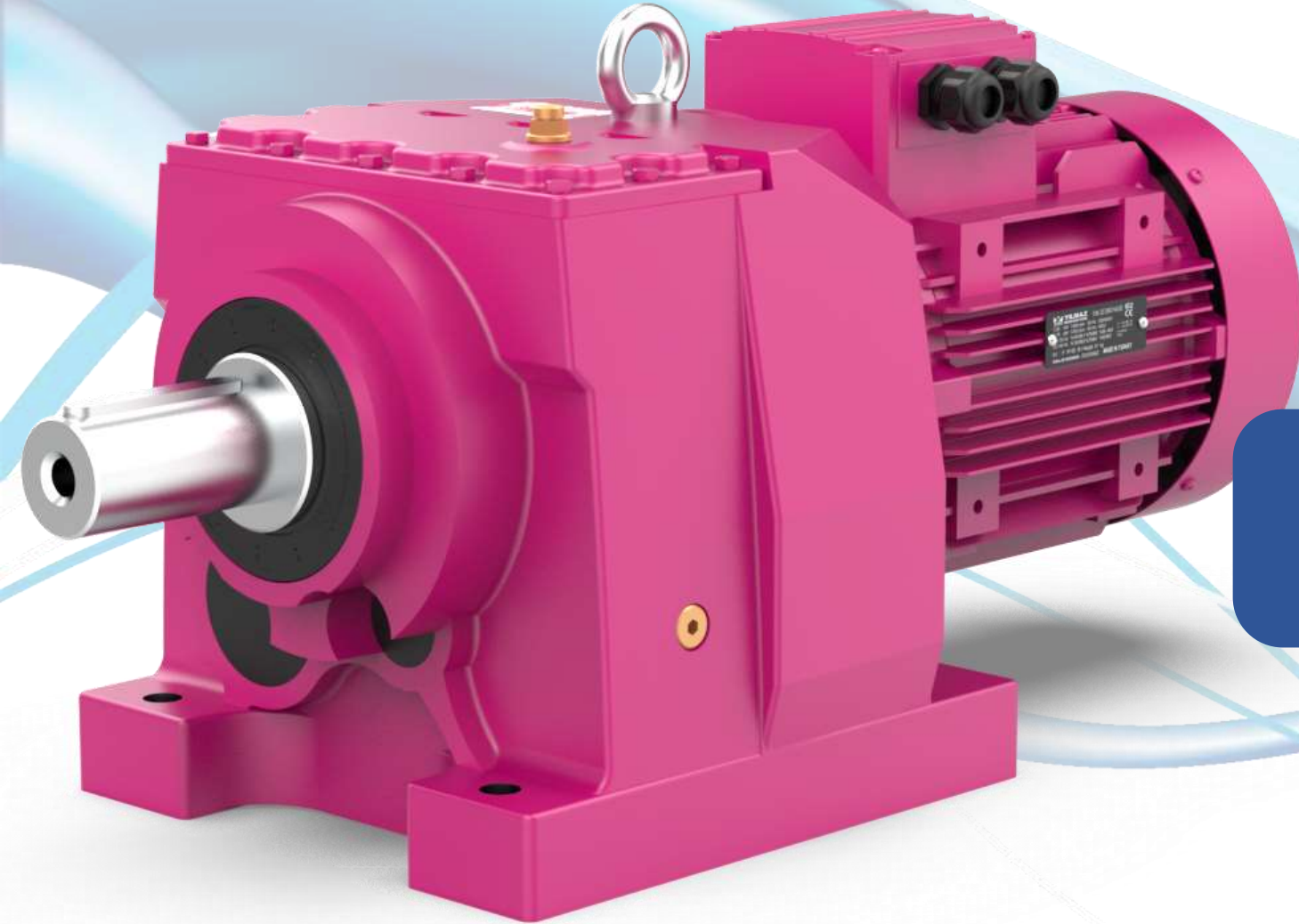
Positioner

- Electropneumatic Positioner,
- 0-10 Volt / 4-20 mA.



Accessories

Our accessories have been developed to provide solutions to all your processes.

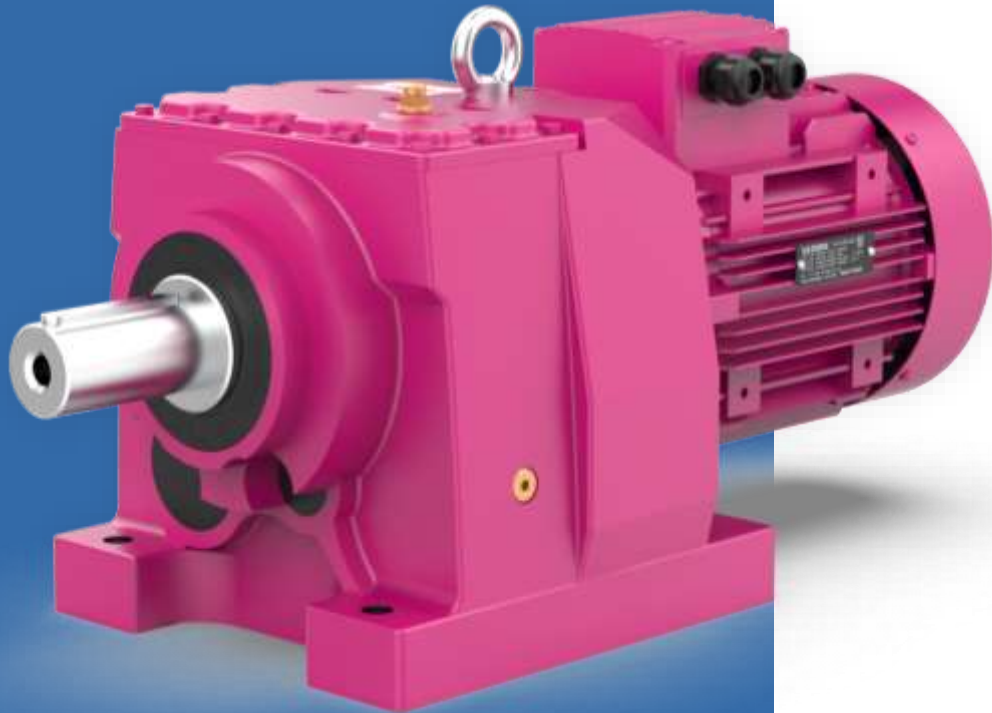


Reducers

Standart Reducers

Foot Mounted

Helical Gear Reducers



They are helical gear reducers with foot connection and full shaft output whose input and output shafts are parallel to each other. It has been developed according to the single body (monoblock) principle, which provides great advantages in rigidity, impermeability, sound and gear strength. It has easy assembly and flexible use.

FEATURES and BENEFITS

Monoblock body design

Giving 2 and 3 levels in the same body

Up to 6 stages reduction with additional reducer coupled

Bearing solutions for high radial and axial loads

Standart Reducers

M Series



Direct Motor
Coupled



IEC B5/B14
Flanged



IEC B5/B14 Motor
Mounted



Without Motor
Input Shaft

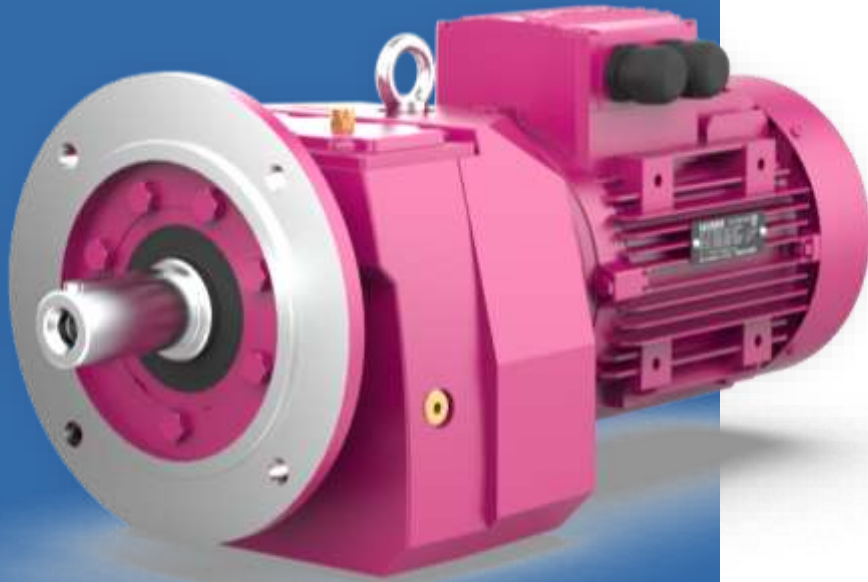


Footed Flanged

Standart Reducers

Flange Connection

Helical Gear Reducers



They are helical gear reducers with flange connection and solid shaft output, whose input and output shafts are parallel to each other. It has been developed according to the single body (monoblock) principle, which provides great advantages in rigidity, impermeability, sound and gear strength. It has easy assembly and flexible use.

FEATURES and BENEFITS

Monoblock body design

Giving 2 and 3 levels in the same body

Up to 6 stages reduction with additional reducer coupled

Bearing solutions for high radial and axial loads

Different output flange options

Standart Reducers



Direct Motor
Coupled



IEC B5/B14
Flanged



IEC B5/B14 Motor
Mounted

N Series



Without Motor
Input Shaft



Flange Options

Standart Reducers

Parallel Shaft

Helical Gear Reducers

They are helical gear reducers whose input and output shafts are parallel to each other at a certain distance, and which are mounted to the machine with bolt holes on the side surfaces of the body, output flange or torque arm.

FEATURES and BENEFITS

Monoblock body design

Giving 2 and 3 levels in the same body

Up to 6 stages reduction with additional reducer coupled

Bearing solutions for high radial and axial loads

Different output shaft options (Hollow shaft, solid shaft, shrink disk shaft, multi-key hollow shaft, multi-keyed solid shaft)

Extruder for extruder applications (DRE type)



Standart Reducers

D Series



Direct Motor
Coupled



IEC B5/B14
Flanged



IEC B5/B14 Motor
Mounted



Without Motor
Input Shaft



Hole Shaft



Spindle Output

Standart Reducers

D Series



Shaft Output
Flange
Connection



Hole Shaft Flange
Connection



Hollow Shaft with
Collet



Hollow Shaft with Multiple Keys
(DIN 5480)



Multiple Spline Shaft
Output (DIN 5480)



Bore Spindle
Drywell

Standart Reducers



Spindle Outlet
Drywell



Drywell with
Clamping Collar



With Extruder
Output



Torque Arm Connected

D Series

Standart Reducers

Cone

Helical Gear Reducers

They are gear units consisting of helical and bevel gears, input and output shafts positioned perpendicular to each other, mounted on the machine with foot holes on the monoblock body, output flange or torque arm.

FEATURES and BENEFITS

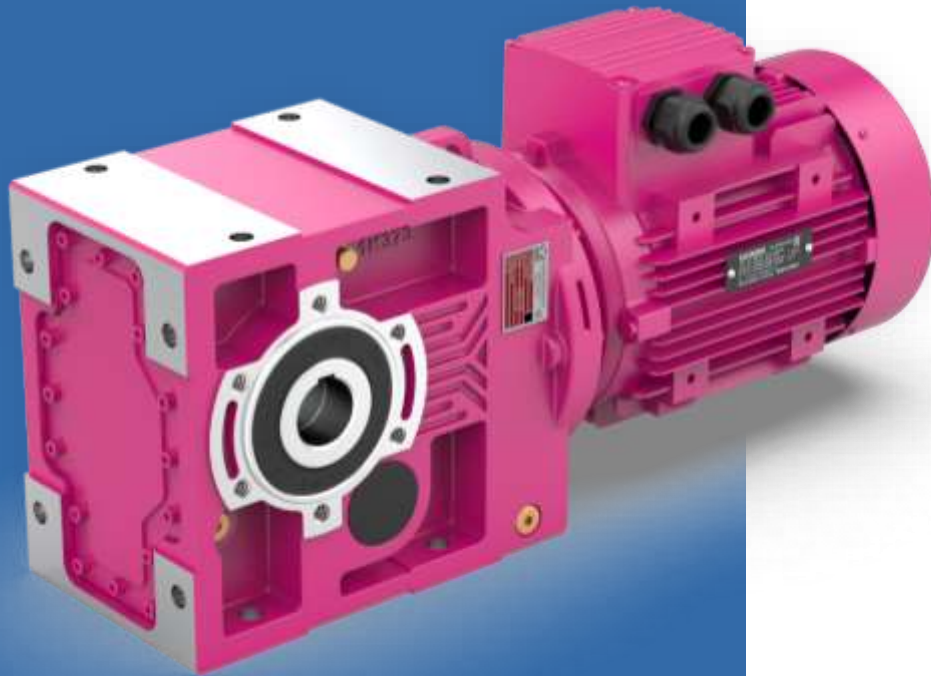
Monoblock body design

High reduction up to 6 steps

Bearing solutions for high radial and axial loads

Different output shaft options (Hollow shaft, solid shaft, shrink disk shaft, multi-key hollow shaft, multi-keyed solid shaft)

Extruder for extruder applications (KRE type)



Standart Reducers

K Series



KR Series
Direct Motor Coupled



KN Series
IEC B5/B14 Flanged



KV Series
IEC B5/B14 Motor Mounted



KT Series
Without Motor Input Shaft



K.00 Series
Hole Shaft



K.01 Series
Spindle Output

Standart Reducers

K Series



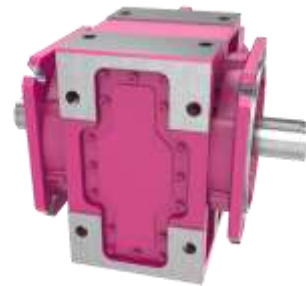
K.02 Series
Shaft Output Flange Connection



K.03 Series
Hole Shaft Flange Connection



K.04 Series
Double Shaft Output



K.05 Series
Double Shaft Output Flanged



K.08 Series
Double Output Flanged Hollow
Shaft



K.0S Series
With Cleats

Standart Reducers

K Series



K.0K Series
Hollow Shaft with Multiple Keys
(DIN 5480)



K.1K Series
Multiple Spline Shaft Output
(DIN 5480)



K.B.0A Series
Bore Spindle Drywell



K.B.1A Series
Spindle Outlet Drywell

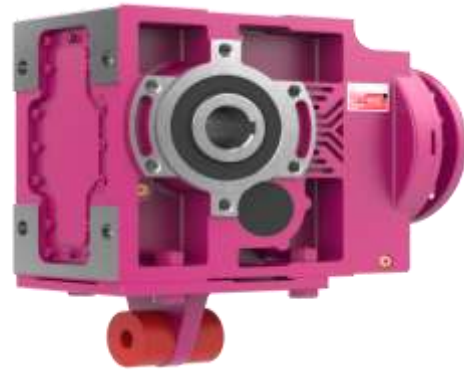


K.B.SA Series
Drywell with Clamping Collar



K.E.0E Series
With Extruder Output

Standart Reducers



K.TK.0 Series
Torque Arm Connected

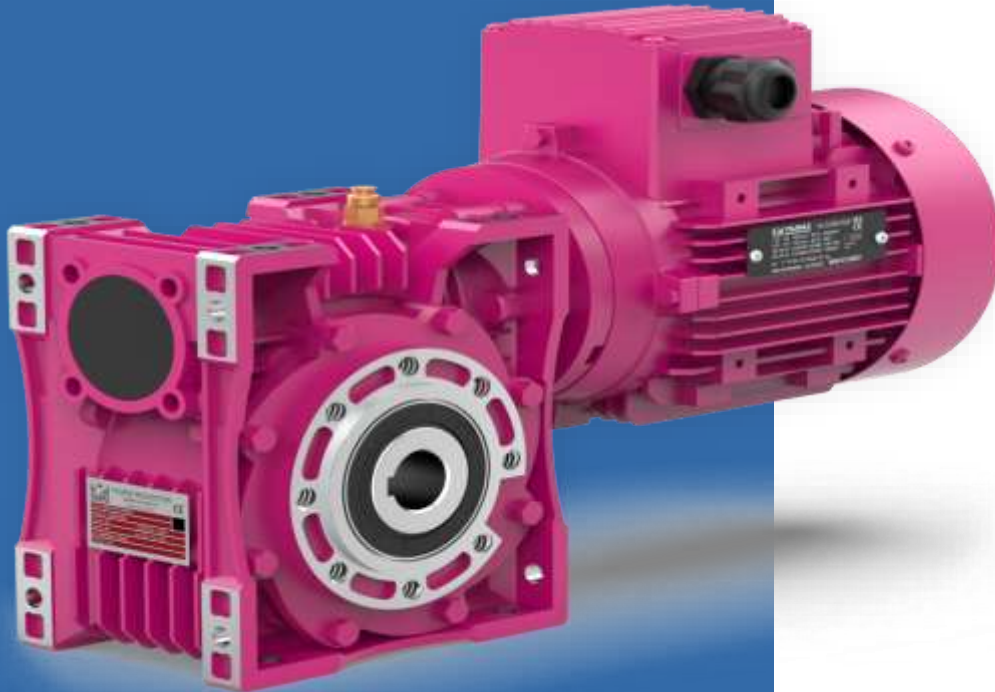


K.TK.1 Series
Torque Arm Connection
(Optional)

K Series

Standart Reducers

Worm Screw Reducers



They are gearboxes consisting of cementation steel worm screw and bronze alloy cogwheel, input and output shafts positioned perpendicular to each other, and mounted to the machine with foot holes on the body, output flange or torque arm.

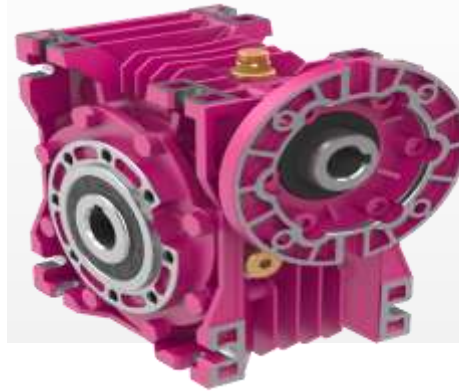
FEATURES and BENEFITS

- Body design with increased thermal power
- Helical step coupled at the inlet for low speed needs
- Bearing solutions for high radial and axial loads
- Special engine connection options
- Aluminum injection molding in housings E30 to E80
- E100 and E125 cast iron body

Standart Reducers



EV Series
IEC B5/B14 Motor Mounted



EN Series
IEC B5 Flanged Without Motor



ET Series
Without Motor Input Shaft

E Series



EN + NR Series
Input Helical Gear Stepped



EN + EV Series
Two Tier Infinite



E.00 Series
Hole Shaft

Standart Reducers



E.01 Series
Spindle Output



E.02 Series
Shaft Output Flange Connection



E.03 Series
Hole Shaft Flange Connection

E Series



E.04 Series
Double Shaft Output



E.05 Series
Double Shaft Output Flanged



E.06 Series
Motorized Butt Shaft Output

Standart Reducers



E.07 Series
Without Motor With Shaft Output
from Butt



E.08 Series
Double Output Flanged Hollow
Shaft



E.TK Series
Torque Arm Connected

E Series

Heavy Duty Reducers

Planetary Gear

Flange Connected Reducers



They are gearboxes consisting of sun, internal gear and planetary gears, mounted on the machine with output flange or torque arm. They are generally used in mobile applications thanks to their compact structure that carries high torque in unit volume.

FEATURES and BENEFITS

High torque transport in unit volume with compact body and specially designed bearings

High radial and axial load bearing design as standard

Different output shaft options (solid shaft, shrink disk shaft, multi-key hollow shaft, multi-key solid shaft)

AC and hydromotor connection flanges

Low speed output with E Series gearbox coupled at the input

Meeting low speed and high torque needs with KR Series gearbox coupled at the entrance

Lubrication and cooling equipment depending on operating conditions

Heavy Duty Reducers

PL Series



P.V.L Series
AC Motor



P.N.L Series
IEC B5/B14 Flanged



P.T.L Series
Without Motor Input Shaft



P.V.L Series
Hydromotor



P.N.L Series
C26/M46 hydromotor flanged



P.N+EV Series
with E Series input

Heavy Duty Reducers

PL Series



PN+KR Series
K Series input



P01 Series
Spindle Output



P0K Series
Hollow Shaft with Multiple
Keys (DIN 5480)



P0L Series
Hollow Shaft with Multiple Keys
(DIN 5482)



P1K Series
Multi-Wedge Male Shaft (DIN
5480)



P1L Series
Multi-Wedge Male Shaft (DIN
5482)

Heavy Duty Reducers



P.0S Series
With Cleats



P.0T Series
Drum Connection Flange



P.TK.0 Series
Single Sided Torque Arm

PL Series



P.TK.1 Series
Double Sided Torque Arm



P.GT Series
With Expansion Tank

Heavy Duty Reducers

Conical Inlet Planetary Gear Flange Connected Reducers



They are gearboxes consisting of sun, internal gear and planetary gears, mounted on the machine with output flange or torque arm. They are generally used in mobile applications thanks to their compact structure that carries high torque in unit volume.

FEATURES and BENEFITS

High torque transport in unit volume with compact body and specially designed bearings

High radial and axial load bearing design as standard

Different output shaft options (solid shaft, shrink disk shaft, multi-key hollow shaft, multi-key solid shaft)

AC and hydromotor connection flanges

90 degree rotation design with bevel gear stage

Lubrication and cooling equipment depending on operating conditions

Heavy Duty Reducers

PK Series



PV.K Series
AC Motor



PN.K Series
IEC B5/B14 Flanged



PT.K Series
Without Motor Input Shaft



PV.K Series
Hydromotor



PN.K Series
C26/M46 hydromotor flanged



P.01 Series
Spindle Output

Heavy Duty Reducers

PK Series



P.0K Series
Hollow Shaft with Multiple Keys
(DIN 5480)



P.0L Series
Hollow Shaft with Multiple Keys
(DIN 5482)



P.1K Series
Multiple Spline Shaft Output
(DIN 5480)



P.1L Series
Multi-Wedge Male Shaft (DIN
5482)



P.0S Series
With Cleats



P.0T Series
Drum Connection Flange

Heavy Duty Reducers



PTK.0 Series
Single Sided Torque Arm



PTK.1 Series
Double Sided Torque Arm



PGT Series
With Expansion Tank

PK Series

Heavy Duty Reducers

Planetary Gear

Foot Mounted Reducers



They are gearboxes consisting of sun, internal gear and planetary gears and mounted on the machine with foot holes on the body. They are generally used in mobile applications thanks to their compact structure carrying high torque in unit volume.

FEATURES and BENEFITS

High torque transport in unit volume with compact body and specially designed bearings

Standard bearing design with high radial and axial load

Different output shaft options (solid shaft, multi-key solid shaft)

AC and hydromotor connection flanges

Low speed output options with E Series gearbox coupled at the input

High efficiency low speed options with KR Series gearbox coupler at the input

Lubrication and cooling equipment depending on operating conditions

Heavy Duty Reducers

RL Series



RV.L Series
AC Motor



RN.L Series
IEC B5/B14 Flanged



RN.L Series
IEC B5/B14 Flanged



RV.L Series
Hydromotor



RN.L Series
C26/M46 hydromotor flanged



RN+EV Series
with E Series input

Heavy Duty Reducers

RL Series



RN+KR Series
K Series input



R.01 Series
Spindle Output



R.1K Series
Multi-Wedge Male Shaft (DIN
5480)



R.1L Series
Multi-Wedge Male Shaft (DIN
5482)



R.0T Series
Drum Connection Flange



R.GT Series
With Expansion Tank

Heavy Duty Reducers

Conical Inlet Planetary Gear Foot Mounted Reducers



They are gearboxes consisting of sun, internal gear and planetary gears and mounted on the machine with foot holes on the body. They are generally used in mobile applications thanks to their compact structure carrying high torque in unit volume.

FEATURES and BENEFITS

High torque transport in unit volume with compact body and specially designed bearings

Standard bearing design with high radial and axial load

Different output shaft options (solid shaft, multi-key solid shaft)

AC and hydromotor connection flanges

90 degree rotation design with bevel gear stage

Lubrication and cooling equipment depending on operating conditions

Heavy Duty Reducers

RK Series



RV.K Series
AC Motor



RN.K Series
IEC B5/B14 Flanged



RT.K Series
Without Motor Input Shaft



RV.K Series
Hydromotor



RN.K Series
C26/M46 hydromotor flanged



R.01 Series
Spindle Output

Heavy Duty Reducers

RK Series



R.1K Series
Multiple Spline Shaft Output (DIN 5480)



R.1K Series
Multi-Wedge Male Shaft (DIN 5482)



R.0T Series
Drum Connection Flange



R.GT Series
With Expansion Tank

Heavy Duty Reducers

Helical Gear

Horizontal Type Reducers

They are heavy industry gearboxes consisting of helical gears, whose input and output shafts are parallel to each other, and which are mounted to the machine with foot holes on the body, output flange or torque arm.

FEATURES and BENEFITS

GGG40 ductile cast iron compact body design

Specially modified gears and tapered roller bearing design

Possibility of connection from six surfaces (M1 to M6)

IEC B5 input flange option for motor connection

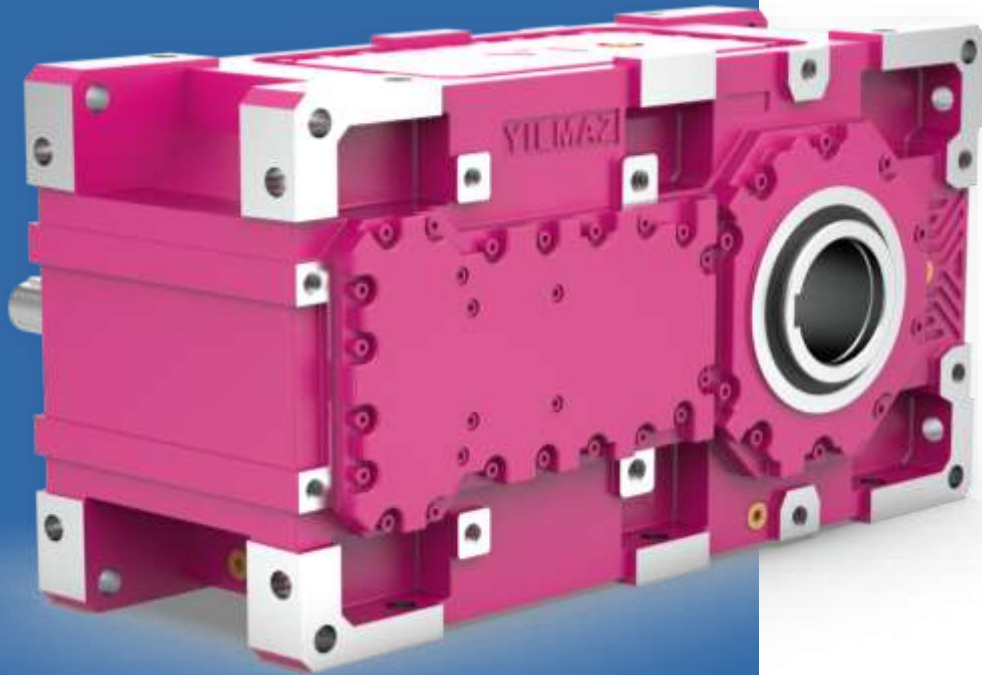
Output flange connection option

Different output shaft options (solid shaft, shrink ring shaft, multi-key hollow shaft, multi-keyed solid shaft)

Lubrication options according to mounting position

Refrigeration equipment depending on operating conditions

Meeting low speed high torque requirement with KR Series gearbox coupler at the entrance



Heavy Duty Reducers

H Series



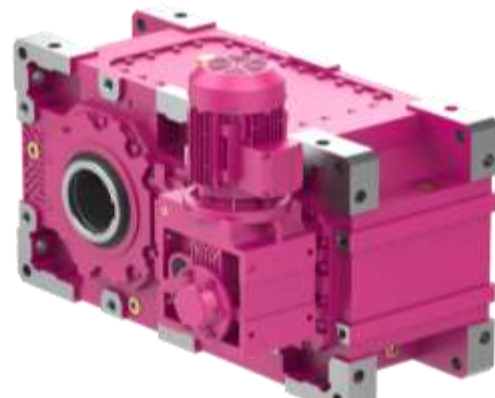
HT Series
Without Motor Input Shaft



HK Series
IEC B5 Flanged Without Motor



HV Series
IEC B5 Flange Motor



HT+KR Series
Low Speed Joint Body



H.00 Series
Hole Shaft



H.01 Series
Spindle Output

Heavy Duty Reducers

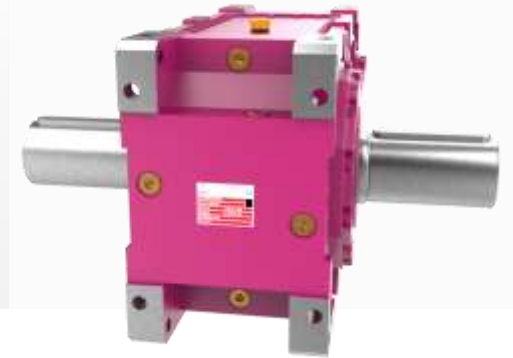
H Series



H.02 Series
Shaft Output Flange Connection



H.03 Series
Hole Shaft Flange Connection



H.04 Series
Double Output Shaft



H.05 Series
Double Output Flanged Shaft
Output



H.08 Series
Double Output Flanged Hollow
Shaft



H.0S Series
With Cleats

Heavy Duty Reducers

H Series



H.0K Series
Hollow Shaft with Multiple Keys
(DIN 5480)



H.1K Series
Multiple Spline Shaft Output
(DIN 5480)



H.B.0A Series
Bore Spindle Drywell



H.B.1A Series
Spindle Outlet Drywell



H.B.SA Series
Drywell with Clamping Collar



H.E.0E Series
With Extruder Output

Heavy Duty Reducers



H.TK Series
Torque Arm Connected

H Series

Heavy Duty Reducers

Bevel-Helical Gear

Horizontal Type Reducers

They are heavy industry gearboxes consisting of bevel and helical gears, input and output shafts positioned perpendicular to each other, and mounted to the machine with foot holes on the body, output flange or torque arm.

FEATURES and BENEFITS

GGG40 ductile cast iron compact body design

Specially modified gears and tapered roller bearing design

Possibility of connection from six surfaces (M1 to M6)

IEC B5 input flange option for motor connection

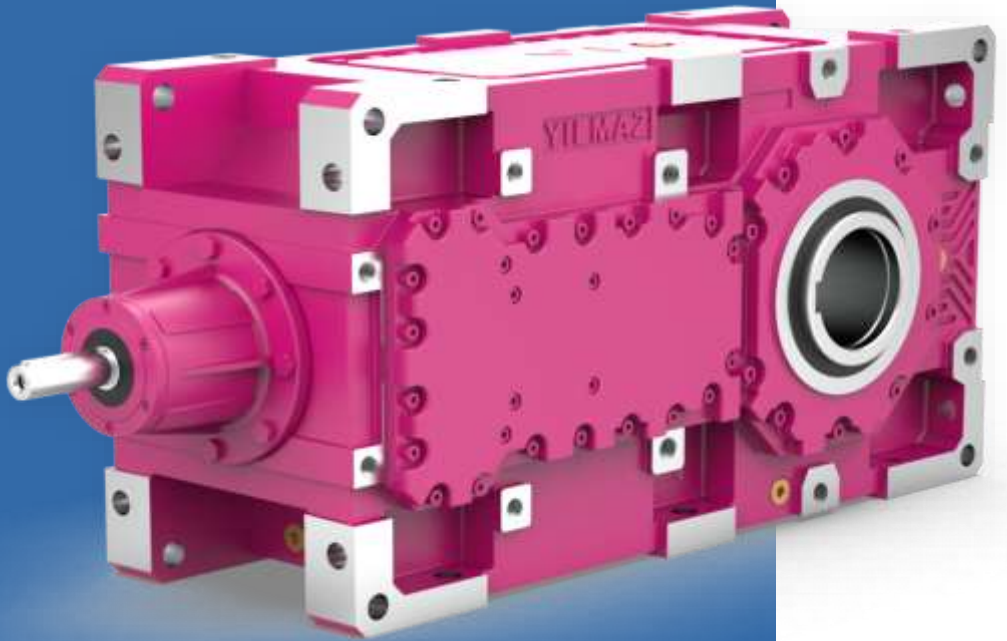
Output flange connection option

Different output shaft options (solid shaft, shrink ring shaft, multi-key hollow shaft, multi-keyed solid shaft)

Lubrication options according to mounting position

Refrigeration equipment depending on operating conditions

Meeting the low speed high torque requirement with DR Series gearbox coupled at the entrance



Heavy Duty Reducers



BT Series
Without Motor Input Shaft



BK Series
IEC B5 Flanged Without Motor



BV Series
IEC B5 Flange Motor

B Series



BT.20 Series
Double Input Shaft



BK.20 Series
IEC B5 Flanged and Bottom
Entry Shaft



BV.20 Series
Motor and Bottom Input Shaft

Heavy Duty Reducers



BT+DR Series
Low Speed Joint Body



B.00 Series
Hole Shaft



B.01 Series
Spindle Output

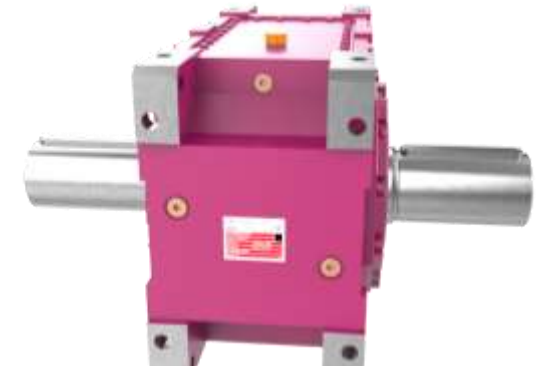
B Series



B.02 Series
Shaft Output Flange Connection



B.03 Series
Hole Shaft Flange Connection



B.04 Series
Double Shaft Output

Heavy Duty Reducers

B Series



B.05 Series
Double Output Flanged Shaft
Output



B.08 Series
Double Output Flanged Hollow
Shaft



B.0S Series
With Cleats



B.0K Series
Hollow Shaft with Multiple Keys
(DIN 5480)



B.1K Series
Multiple Spline Shaft Output
(DIN 5480)



B.B.0A Series
Bore Spindle Drywell

Heavy Duty Reducers



B.B.1A Series
Spindle Outlet Drywell



B.B.SA Series
Drywell with Clamping Collar



B.TK Series
Torque Arm Connected

B Series

Sectoral Reducers

For Cranes

Lifting Reducers

They are helical gear reducers with a long inter-axis, parallel input and output shafts, and multiple splined output shafts, specially designed for crane lifting applications.

FEATURES and BENEFITS

Monoblock body design from GGG40 ductile cast iron

High radial load carrying capacity due to tapered roller bearing design

Long axis distance for use of large drum diameters

Solutions with electromagnetic brake, encoder and forced fan behind the motor

Ready-made drum connection flange according to output shaft

Multiple spline output shaft in heat treated nitriding steel

Possibility of connection to the crane chassis with short bolts

Wide speed (lifting speed) range

2/12 pole double speed motor solutions



Sectoral Reducers



VR Series
Direct Motor Coupled



VR.1K Series
Multi Key Output Shaft (DIN 5480)



VR.1L-1M Series
Op. Multi Key Output Shaft (DIN 5480)



VR.0T Series
Drum Connection Flange

V Series

Sectoral Reducers

Tower Crane

Conversion Reducers



They are compact planetary gearboxes that are capable of reliably carrying the high radial load and peak torques to which they are exposed due to the working principle, which is generally used in the blade-nacelle guidance of wind turbines and tower crane rotation. Pinion gear can be produced as a single piece to the output shaft when desired.

FEATURES and BENEFITS

Wide torque and cycle range

Reinforced output flange and bearings with high radial load carrying capacity

Pinion gear options in solid 8620 material for output shaft on request

Expansion tank application for high humidity environments

Sectoral Reducers



PVB Series
AC Motor



PNB Series
IEC B5/B14 Flanged



PTB Series
Without Motor Input Shaft

PB Series



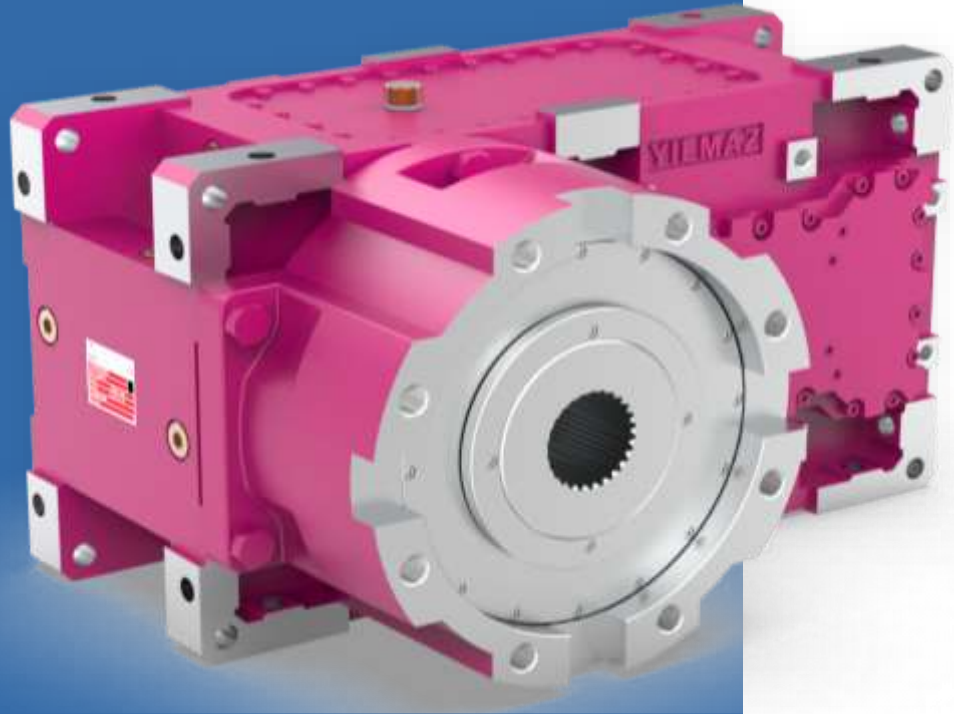
PB.01 Series
National Exit



PB.P1 Series
Integrated Pinion Shaft

Sectoral Reducers

Extruder Reducers



They are H Series reducers with specially designed output extruder throat and bute bearing to meet the axial loads that occur during the operation of plastic injection machines. It is offered with cooling equipment to prevent thermal problems that may occur under heavy working conditions.

FEATURES and BENEFITS

GGG40 ductile cast iron body and extruder throat

29400 Series with bute bearing

Bute bearing options according to screw load

Specially modified gears and tapered roller bearing design,

IEC B5 input flange option for motor connection

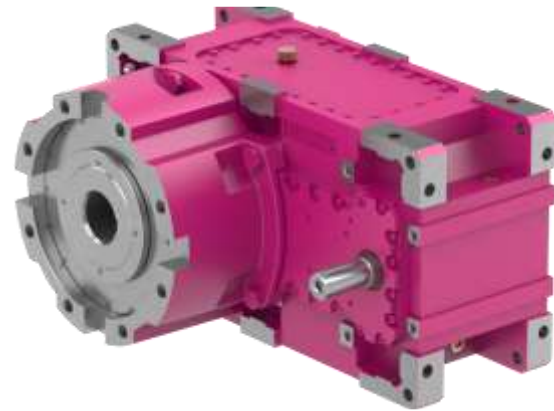
Different output shaft options (Spring or multiple splined extruder shaft options)

Lubrication options according to mounting position

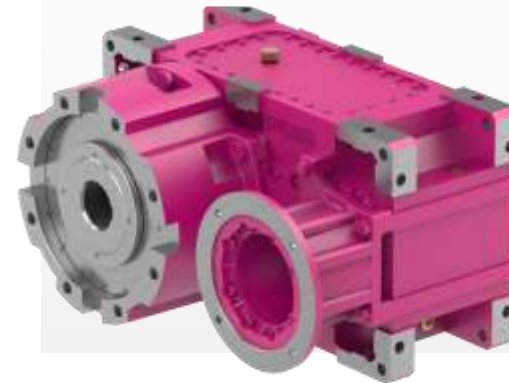
Cooling equipment (Heat exchanger or serpentine cooling)

Sectoral Reducers

HE Series



HTE Series
Without Motor Input Shaft



HKE Series
IEC B5 Flanged Without Motor



HVE Series
IEC B5 Flange Motor



H.E.0E Series
Standard Extruder Outlet, Hollow Shaft



H.E.0EK Series
Standard Extruder Spout,
Multiple Spline (DIN 5480)



H.E.1E Series
Optional Extruder Outlet,
Hollow Shaft

Sectoral Reducers



H.E.1EK Series

Optional Extruder Spout,
Multiple Spline (DIN 5480)

HE Series

Sectoral Reducers

Parallel Shaft Helical Gear

Extruder Reducers

They are parallel shaft extruder reducers with output extruder throat and bute bearing specially designed for small capacity plastic injection machines.

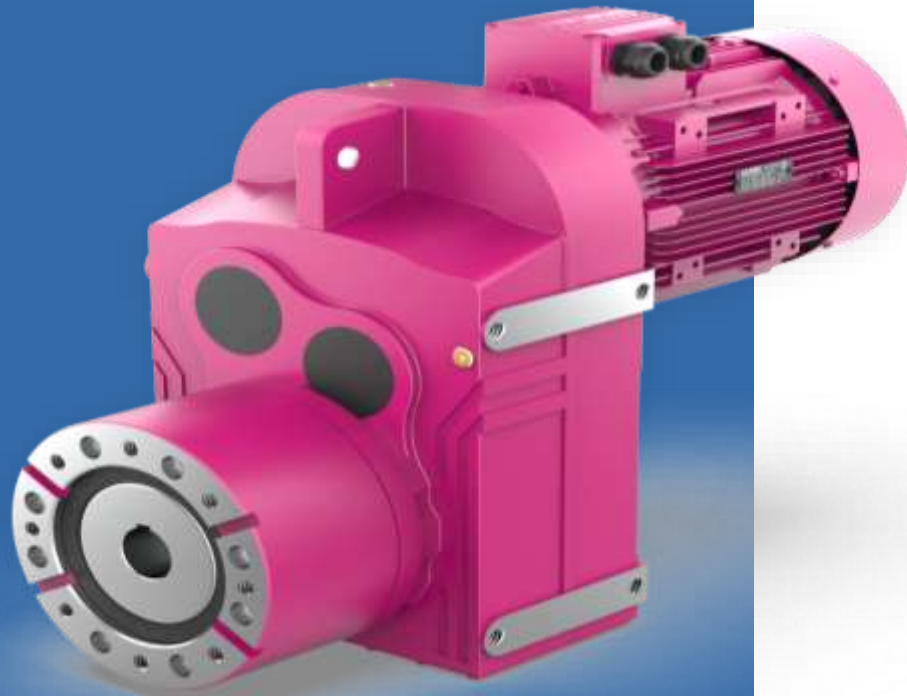
FEATURES and BENEFITS

Compact design thanks to direct motor coupling

29400 Series with bute bearing

4 different mounting positions

Different output shaft options (Spring or multiple splined extruder shaft options)



Sectoral Reducers

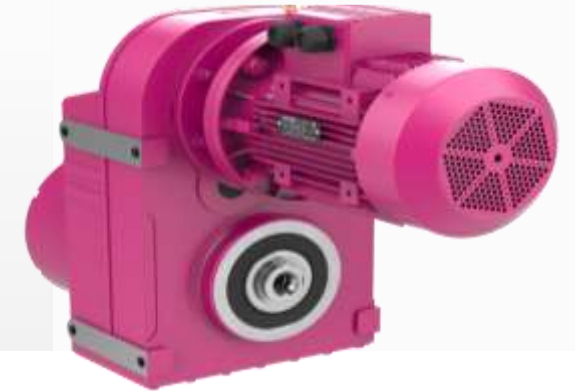
DE Series



DRE Series
Direct Motor Coupled



DNE Series
IEC B5/B14 Flanged



DVE Series
IEC B5/B14 Motor Mounted



DTE Series
Without Motor Input Shaft



D.E.0E Series
Hole Shaft Extruder Outlet Strait



D.E.0EK Series
Multiple Wedge Extruder (DIN 5480)

Sectoral Reducers

Bevel-Helical Gear Reducers

K Series gearboxes with output extruder throat and bute bearing specially designed for small-capacity injection molding machines.

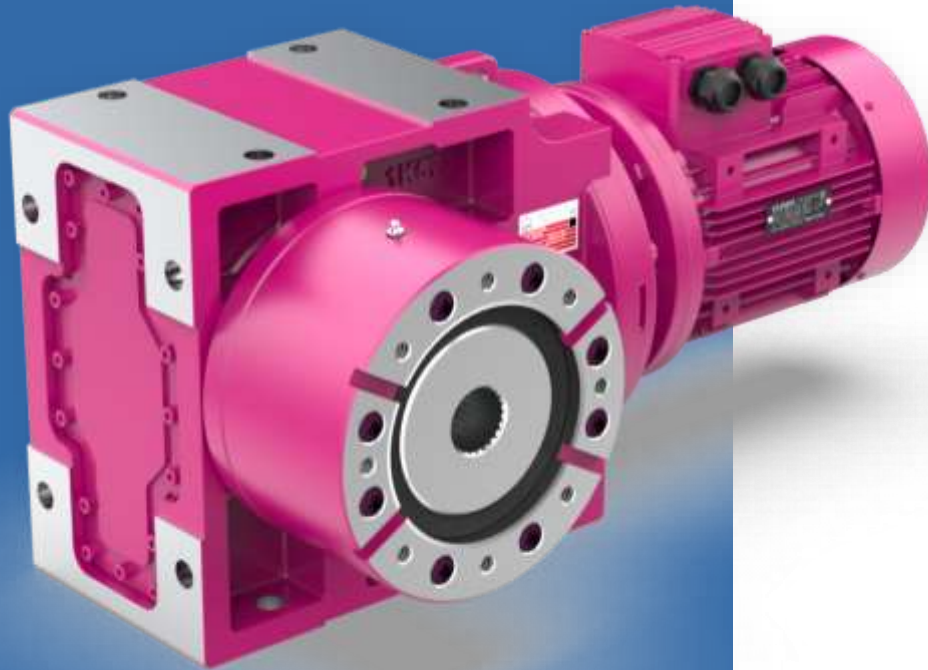
FEATURES and BENEFITS

90 degree rotation design with direct motor coupled

29400 Series with bute bearing

4 different mounting positions

Different output shaft options (Spring or multiple splined extruder shaft options)



Sectoral Reducers



KRE Series
Direct Motor Coupled



KNE Series
IEC B5/B14 Flanged



KVE Series
IEC B5/B14 Motor Mounted

KE Series



KTE Series
Without Motor Input Shaft



K.E.OE Series
Hole Shaft Extruder Outlet Strait



K.E.OEK Series
Multiple Wedge Extruder (DIN 5480)

Sectoral Reducers

Mixer-Drywell

Parallel Shaft Reducers



They are D Series mixer reducers with reinforced output bearing, labyrinth seal system and oil filling pool against the risk of oil leakage. They are especially used in waste water treatment plants and food industry where oil leakage is absolutely not desired. In case of oil leakage, it can be detected with the optional oil sensor.

FEATURES and BENEFITS

Reinforced output flange and bearing selections against high radial and axial loads from the mixer shaft

Special flange oil pool design and optional oil sensor option for front detection of oil leakage

Labyrinth seal protection system for dusty working environments

Sectoral Reducers

DB Series



DRB Series
Direct Motor Coupled



DNB Series
IEC B5/B14 Flanged



DVB Series
IEC B5/B14 Motor Mounted



DTB Series
Without Motor Input Shaft



D.B.0A Series
Bore Spindle Drywell



D.B.1A Series
Spindle Outlet Drywell

Sectoral Reducers



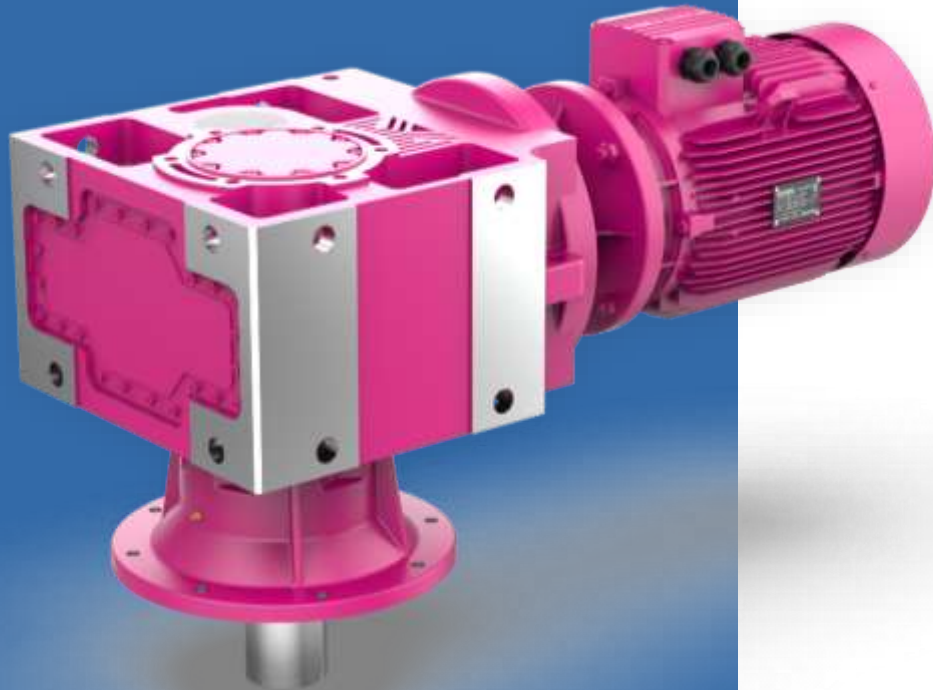
D.B.SA Series
Drywell with Clamping Collar

DB Series

Sectoral Reducers

Mixer-Drywell

Conical Input Reducers



K Series mixer reducers with reinforced output bearing, labyrinth seal system and oil filling pool against oil leakage risk. They are especially used in waste water treatment plants and food industry where oil leakage is absolutely not desired. In case of oil leakage, it can be detected with the optional oil sensor.

FEATURES and BENEFITS

Reinforced output flange and bearing selections against high radial and axial loads from the mixer shaft

Special in-flange oil pool design and optional oil sensor option for front detection of oil leakage

Labyrinth seal protection system for dusty working environments

Sectoral Reducers



KRB Series
Direct Motor Coupled



KNB Series
IEC B5/B14 Flanged



KVB Series
IEC B5/B14 Motor Mounted

KB Series



KTB Series
Without Motor Input Shaft



K.B.0A Series
Bore Spindle Drywell



K.B.1A Series
Spindle Outlet Drywell

Sectoral Reducers

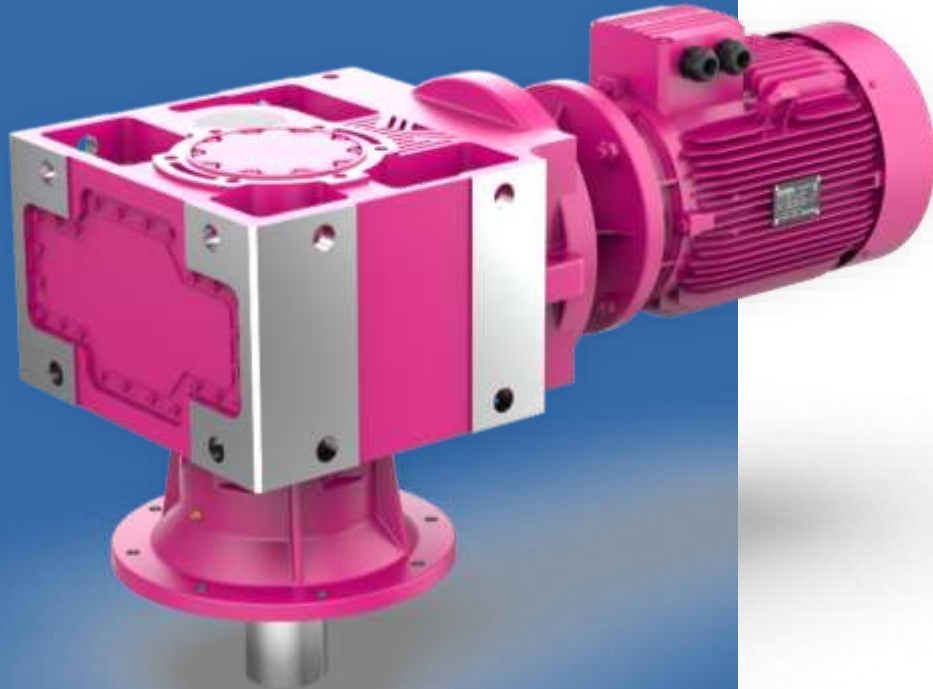


K.B.SA Series
Drywell with Clamping Collar

KB Series

Sectoral Reducers

Drywell Parallel Spindle Horizontal Reducers



They are H Series mixer reducers with reinforced output bearing, labyrinth seal system and oil filling pool against the risk of oil leakage. They are especially used in waste water treatment plants and food industry where oil leakage is absolutely not desired. In case of oil leakage, it can be detected with the optional oil sensor.

FEATURES and BENEFITS

Reinforced output flange and bearing selections against high radial and axial loads from the mixer shaft

Special in-flange oil pool design and optional oil sensor option for front detection of oil leakage

Labyrinth seal protection system for dusty working environments

Sectoral Reducers



HTB Series
Without Motor Input Shaft



HKB Series
IEC B5 Flanged Without Motor



HVB Series
IEC B5 Flange Motor

HB Series



H.B.0A Series
Bore Spindle Drywell



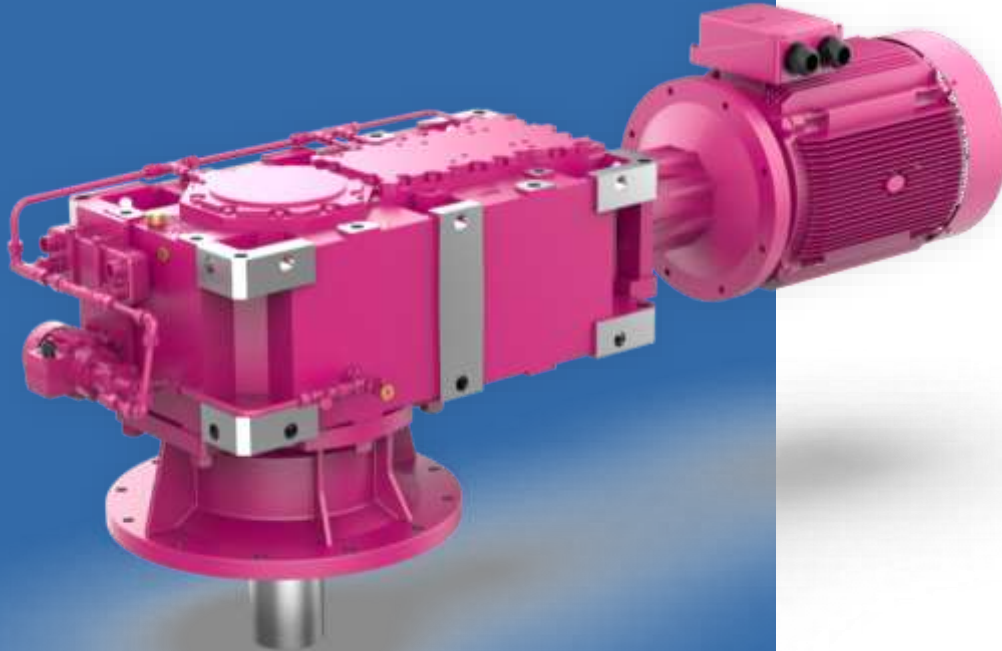
H.B.1A Series
Spindle Outlet Drywell



H.B.SA Series
Drywell with Clamping Collar

Sectoral Reducers

Drywell Conical Inlet Horizontal Reducers



They are B Series mixer reducers with reinforced output bearing, labyrinth seal system and oil filling pool against the risk of oil leakage. They are especially used in waste water treatment plants and food industry where oil leakage is absolutely not desired. In case of oil leakage, it can be detected with the optional oil sensor.

FEATURES and BENEFITS

Reinforced output flange and bearing selections against high radial and axial loads from the mixer shaft

Special flange oil pool design and optional oil sensor option for front detection of oil leakage

Labyrinth seal protection system for dusty working environments

Sectoral Reducers



BTB Series
Without Motor Input Shaft



BKB Series
IEC B5 Flanged Without Motor



BVB Series
IEC B5 Flange Motor

BB Series



B.B.0A Series
Bore Spindle Drywell



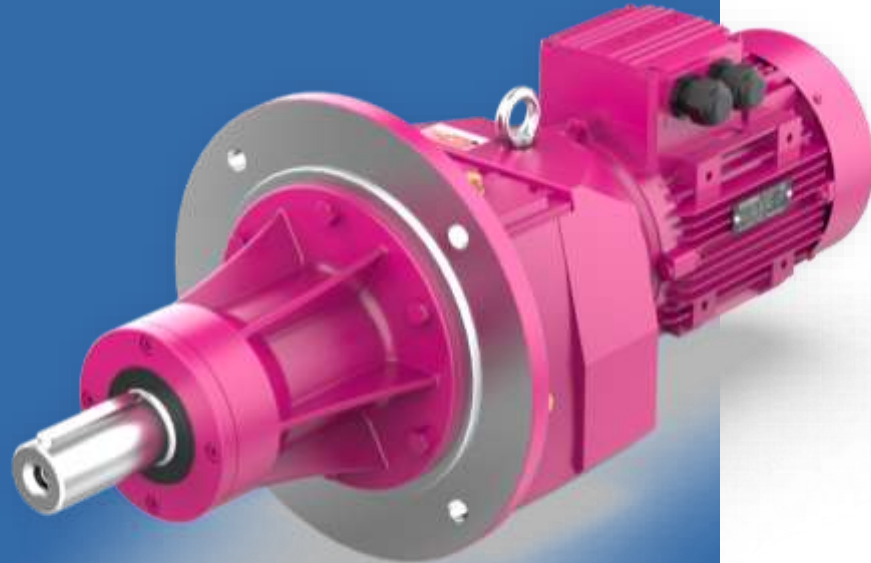
B.B.1A Series
Spindle Outlet Drywell



B.B.SA Series
Drywell with Clamping Collar

Sectoral Reducers

Mixer Reducers



They are helical gear reducers with special outlet throat and reinforced output bearings to meet the resulting radial and axial loads, designed specifically for mixer applications.

FEATURES and BENEFITS

Reinforced ball bearing output agitator throat

High radial load carrying capacity thanks to long agitator throat

Wide power and rev range

Special exit felt applications

Sectoral Reducers



NRB Series
Direct Motor Coupled



NNB Series
IEC B5/B14 Flanged



NVB Series
IEC B5/B14 Motor Mounted

NB Series



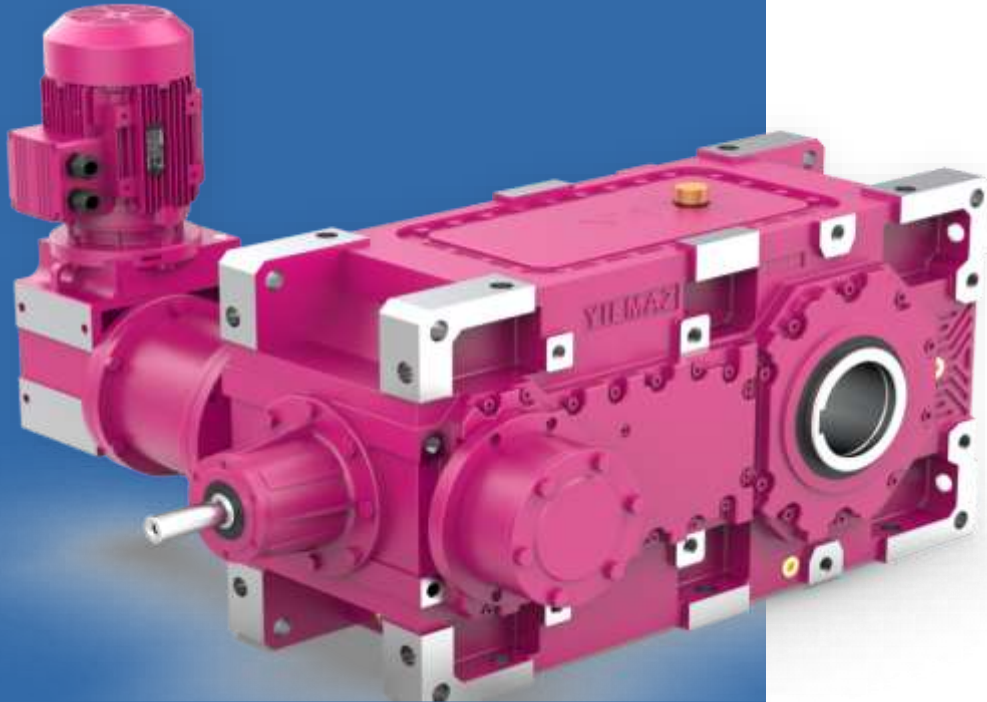
NTB Series
Without Motor Input Shaft



NRB Series
National Exit

Sectoral Reducers

Auxiliary Drive Reducers



BT Series gearbox with auxiliary drive gearbox and mechanical lock option on the body, which is operated during the maintenance of bucket elevators.

FEATURES and BENEFITS

Auxiliary drive reducer that meets the need for low speed during maintenance

Two different auxiliary drive gearbox options for full and empty bucket elevators

Mechanical lock application on the body

Special lock application between main reducer and auxiliary drive reducer

IEC B5 input flange option for motor connection

Refrigeration equipment depending on operating conditions

Sectoral Reducers



BTY Series
Without Motor Input Shaft



BKY Series
IEC B5 Flanged Without Motor



BKY Series
IEC B5 Flange Motor

BTY Series



BTY.00 Series
Hole Shaft



BTY.01 Series
Spindle Output



BTY.0S Series
With Cleats

Sectoral Reducers



BTY.0K Series
Hollow Shaft with Multiple Keys
(DIN 5480)



BTY.1K Series
Multiple Spline Shaft Output
(DIN 5480)

BTY Series

Sectoral Reducers

Motorless Conveyor Reducers

They are motorless gearboxes with hollow shaft and compact body structure consisting of two-stage helical gears specially designed for conveyor applications.

FEATURES and BENEFITS

Compact design with two-stage helical gear without motor

Reinforced input bearings suitable for belt-pulley use

6 different mounting positions

Different output shaft diameter sizes

Output shaft options with spline or shrink disk

Mechanical lock application suitable for one-way operation on inclined conveyors

Possibility of connection with torque arm



Sectoral Reducers



TT Series
Without Motor Input Shaft



T.00 Series
Hole Shaft



T.0S Series
With Cleats

T Series

Sectoral Reducers

Concrete Mixer Reducers

Conical input stage planetary gearboxes with special input flange for pulley connection, produced for double shaft concrete mixers (Twin Shaft).

FEATURES and BENEFITS

Compact design with bevel and planetary gear stages

Inlet flange suitable for pulley connection

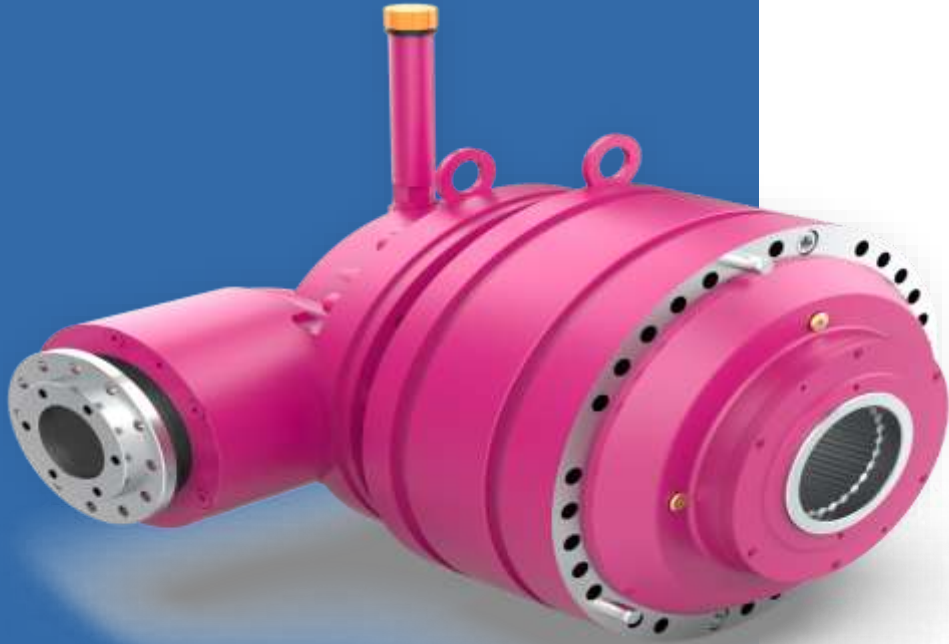
Reinforced input bearings with tapered rollers

GGG40 ductile cast iron inlet flange and body

Multi-wedge interconnects

Standard outlet seal protection cover

Optional expansion tank application



Sectoral Reducers



PF Series
Inlet Flange for Pulley Connection



PF.0K Series
Hollow Shaft with Multiple Keys
(DIN 5480)



PF.0L Series
Hollow Shaft with Multiple
Keys (DIN 5482)

PF Series

Sectoral Reducers

Worm Screw

Saw Reducers

E Series gearboxes, specially designed for band saw benches, with special outlet throat, reinforced output bearings and special sealing elements to meet the radial loads during the cutting process.

FEATURES and BENEFITS

Output flange reinforced with double row bearings

Special felt system to prevent boron oil from entering the reducer during the cutting process.

Heat treated nitriding steel output shaft

Quiet operation thanks to ground bevel gear set

Flange and shaft options in different sizes



Sectoral Reducers



EV Series
IEC B5/B14 Motor Mounted



EV.X2 Series
Shaft Output Flange Connection

EV Series

Sectoral Reducers

Bevel-Helical Gear

Saw Reducers

K Series gearboxes are specially designed for band saw benches, have special outlet throat, reinforced output bearings and special sealing elements to meet the radial loads during the cutting process.

FEATURES and BENEFITS

Output flange reinforced with double row bearings

Special felt system to prevent boron oil from entering the reducer during the cutting process.

Heat treated nitriding steel output shaft

Quiet operation thanks to ground bevel gear set

Flange and shaft options in different sizes



Sectoral Reducers



KR Series
Direct Motor Coupled



KR.X2 Series
Shaft Output Flange Connection

KR Series

Sectoral Reducers

Circular

Saw Reducers

They are helical gear reducers specially designed for circular saw machines that make precise and serial cutting thanks to their low gear gap and rigid body structure.

FEATURES and BENEFITS

Low backlash and bearing selection for precision cutting

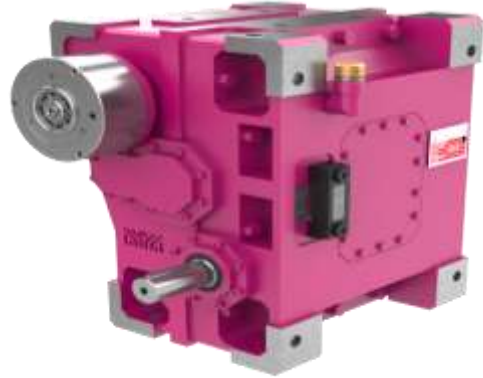
GGG40 ductile cast iron rigid body

Flange made of detachable 4140 material for saw blade attachment

Shaft and flange input for brake connection



Sectoral Reducers



CT Series
Shaft Input



CT Series
Saw Blade Connection Flange

CT Series

Sectoral Reducers

Tramway Reducers



They are silent, highly efficient tram reducers thanks to their high quality ground hypoid gears, rigid monoblock body structure and labyrinth system that eliminates felt friction losses and provides contactless sealing.

FEATURES and BENEFITS

Single stage compact structure with hypoid gear mechanism

Rigid body made of ductile iron of monoblock GGG40 material

Special labyrinth cover systems providing sealless sealing on input and output shaft

Bearings with high working life

Elastic coupling on input shaft, wedge type threaded coupling connection on output shaft

Sectoral Reducers



LRG Series
Elastic Coupling Entry



LRG Series
Wedge Type Gear Coupling

LRG
Series

Sectoral Reducers

Helical Gear

Train Reducers

Non-contact labyrinth sealing systems, in which conventional seals are not used, are two-stage helical gear train gearboxes with special lubrication channels, body structure and gear modifications calculated considering actual operating conditions.

FEATURES and BENEFITS

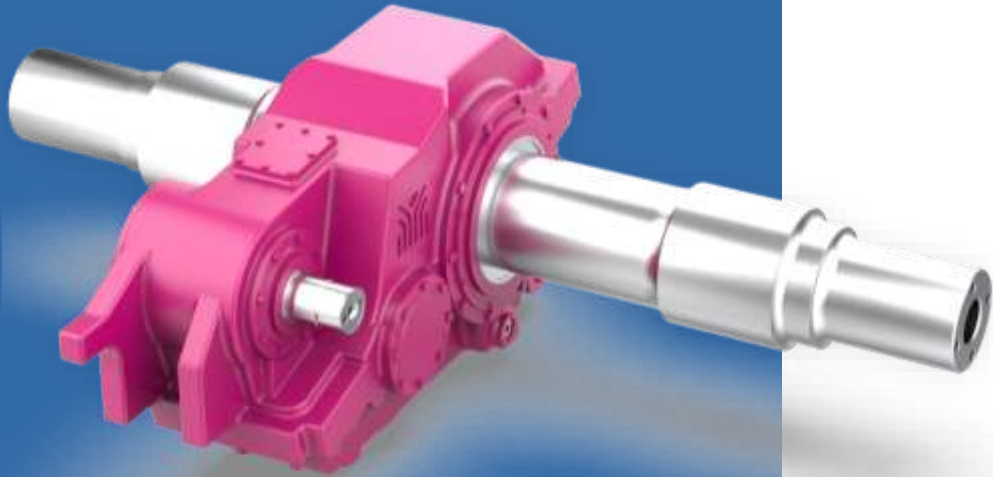
Parallel shaft helical gear reducer design

Special labyrinth cover systems providing sealless sealing on input and output shaft

Nodular cast iron rigid body made of GGG40 material

Gears that do not require replacement during the 30-year operating life of the train

Maintenance-free bearings for up to 1,500,000 km of use of the train



Sectoral Reducers



HRG Series
Conical Inlet Shaft

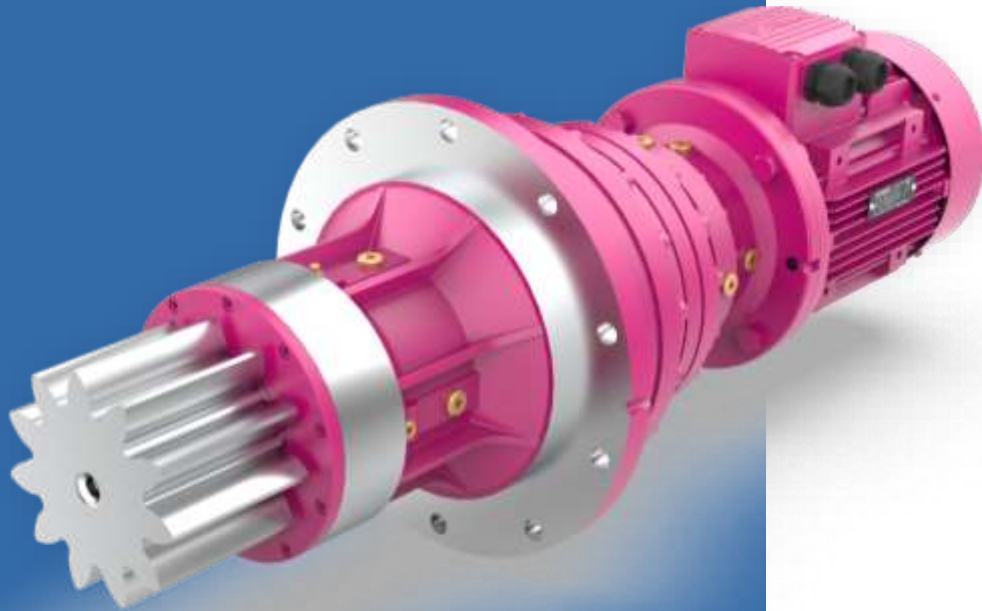


HRG Series
Double Shaft Output

HRG
Series

Sectoral Reducers

Wind Turbine Reducers



They are compact planetary gearboxes used in the blade-nacelle orientation of wind turbines. Due to their working principle, they are capable of reliably carrying the high radial loads and peak torques to which they are exposed.

FEATURES and BENEFITS

Reinforced output flange and bearings with high radial load carrying capacity

Pinion gear options from solid 8620 material to output shaft

Sectoral Reducers



PR3704L.P1 Series



PR2734L.P1 Series



PR2333L.P1 Series

P.R Series

Automation Products

Basic Series

Speed Controllers



Small size, economical and easy to use panel type speed controller. It is designed to allow the development of many applications with its internal potentiometer, digital inputs-outputs, analog input and communication facilities.

FEATURES and BENEFITS

Power: up to 22kW

Supply: 1ph 230V (170..240V)

Supply: 3ph 400V (330..440V)

Automatic Recognition Feature

Easy-to-Use Oriented

PID Process Control

Jogging

IP20-Protection Class

V/F Control and Torque Boost

Multifunctional I/O

Heavy Duty (60s 150%)

RS485 (MODBUS) Communication

Automation Products

Advanced Series Speed Controllers



High performance, easy to use panel type speed controller with open loop vector control feature. It is designed to allow the development of many applications with digital inputs-outputs, analog inputs-outputs and communication facilities.

FEATURES and BENEFITS

Power: up to 450kW

Supply: 1 Phase 230V +/-15%

Supply: 3 Phase 400V +/-15%

Automatic Recognition Feature

Easy-to-Use Oriented

PID Process Control

Jogging

IP20-Protection Class

SLVC - Vector Control

Multifunctional I/O

Heavy Duty Usage (3s 180%, 60s 150%)

RS485 (MODBUS) Communication

Crane Application Specific Functions

Automation Products

Expert Series

High performance, easy to use panel type speed controller with open loop and closed loop vector control features. It is designed to allow the development of many applications with digital inputs-outputs, analog inputs-outputs and communication facilities. It also supports different industrial communication protocols and external encoders with expansion cards.



FEATURES and BENEFITS

Power : up to 630kW

Supply: 1 Phase 230V +/-15%

Supply: 3 Phase 400V +/-15%

Automatic Recognition Feature

Especially Easy-to-Use Oriented

PM (Magnet) Motor Control Capability

RS485 (MODBUS) Communication

Multi-Functional I/O

PID Process Control

Jogging

SLVC - Vector Control

Closed Loop Vector Control (with Encoder)

Durable Surface Coated Cards

Heavy Duty Usage (3s 180%, 60s 150%)

Automation Products

Integrated Series

Small size, economical and easy to use, integrated speed controller on the motor, which does not require a board. It is designed to allow the development of many applications with digital inputs-outputs, analog inputs and communication facilities.

FEATURES and BENEFITS

- Power : up to 2.2kW
- Supply : 1 Phase 230V +/- 15%
- IP65 Protection Level
- Engine integrated structure
- V/f Scalar Control
- Surface Coated Cards
- MODBUS Communication



Automation Products

Wall Mount

Economical and easy-to-use, wall-mounted speed controller that does not require a board, also has scalar control as well as an open-loop vector control version. It is designed to allow the development of many applications with digital inputs-outputs, analog inputs and communication facilities.



FEATURES and BENEFITS

Power: up to 30kW

Supply : 1 Phase 230V +/-15%

Supply : 3 Phase 400V +/-15%

Especially Easy-to-Use Oriented

High Protection Class (IP65)

Mounting Opportunity on Motor with Adapter Plate

RS485 (MODBUS) Communication

Multi-Functional I/O

PID Process Control

Multi-Pump Application (Up to 6 Pumps Control Opportunity)

Equal Aging

Anti-Freeze Feature in the Pump

Jogging

Durable Surface Coated Cards

Heavy Duty Usage (3s 180%, 60s 150%)

Automation Products

Application Specific Drivers



Small size, economical and easy to use, panel type automatic door speed controller. It is designed to allow the development of many applications with digital inputs-outputs, door position detection and communication with encoder.

FEATURES and BENEFITS

Power: 0.4kW to 2.2kW

Supply: 1 Phase 230V (200..250V) - 3 Phase 400V (330..440V)

Possibility of Defining Position Based Speed Profiles with Encoder

Possibility to Work Only with Limit Switches

Automatic Door Length Definition Feature (In Encoder Operation)

Automatic Stop Ramp Extension (Protection Feature)

Surface Coated Cards

IP20 Protection Level

MODBUS Communication

Automation Products

Application Specific Drivers

Economical and easy to use, panel type multi-pump speed controller. It is designed to allow the development of many applications with digital inputs-outputs, working from devices and/or network up to four pumps, setting different set values at different times of the day and communication possibilities.

FEATURES and BENEFITS

CE Declaration, International Certificates

Multi-pump application with up to 4 pumps

Up to 4 Pumps Starting Each Pump From Drive and/or Mains

Ability to Set Different Set Value at Different Times During the Day

0-10V or 0-20mA/4-20mA feedback input

Fan/Pump Load Specific 60 Seconds 120% Overload Capacity

Pressure control with built-in PID

MODBUS Communication

Operating Ambient Temperature Range -10...+40°C

Automatic Torque Boost

Surface Coated Cards

IP20 Protection Level



Automation Products

Application Specific Drivers

High performance, economical and easy to use compressor-specific speed controller with open loop vector control feature. It is designed to offer a complete solution to compressor applications with digital inputs-outputs, temperature and 4-20mA pressure sensor inputs, touchscreen HMI panel, and communication facilities.

FEATURES and BENEFITS

Single Drive Model 7.5kW to 132kW

Dual Drive Model from 22kW to 160kW

Supply: 3 Phase 400V (330..440V)

Sensorless Vector Control Mode (SLVC)

Compressor Load Specific 60s 150% Overload Capacity

Automatic Torque Boost

Automatic Stop Ramp Extension (Protection Feature)

Surface Coated Cards

Jogging Work

IP20 Protection Level

MODBUS Communication



Electrical Motors

AC Motors



Since the ELK motor is designed to meet the IE3 efficiency class in terms of its basic design and technology; Since the mechanical dimensions remain the same, it provides its customers with a smooth transition opportunity in the transition from the currently mandatory IE2 efficiency class to the IE3 efficiency class. Along with the standard engines it produces in accordance with European standards, ELK engine also produces special engines that will provide advantages to its customers in terms of performance and cost.

FEATURES and BENEFITS

Motors in efficiency classes IE2 and IE3 with VDE certification from 0.25kW motor power

High starting and tipping moments

Single winding and two separate winding double speed motors

Motors in the 71 -132 body range have a detachable foot structure, and the user can easily create the motor structure with the terminal box on the right, on the top or on the left by changing the foot position.

Compact motors in efficiency class IE2

Special motors for 87 Hertz Application

Special motors in class S3 instead of S1 for intermittent operation

Electrical Motors



AC Motor
B3 - Without Foot Flange



AC Motor
B5/B14 - Without Foot and
Flange Connection



AC Motor
B35/B34 - Footed Flange
Connection

AC Motors

Export Countries

Kazakhstan

Uzbekistan

Azerbaijan

Kyrgyzstan

Turkmenistan

Tajikistan

OKEREL Foreign Trade Inc.

Barbaros Mah. Fesleğen Sk.

Ağaoğlu My World Southside Sitesi B2/15

Ataşehir İstanbul

90 (532) 210 01 84

info@okerel.com

Headquarter



OKEREL
DIŐ TİCARET A.Ő.

THANK YOU

www.okerel.com